

Central Sanskrit University

Jaipur Campus

(Established by an Act of Parliament)

(Formerly Rashtriya Sanskrit Sansthan, Deemed to be University)

Under Ministry of Education, Govt. of India

FEEDBACK ANALYSIS REPORT

2017-18 to 2021-22



DEPARTMENT OF JAINDARSHAN



Address for correspondence

Gopalpura Bypass, Triveni Nagar Jaipur, Pin (302018)

Tel.No: 0141-2761115, Fax No: 0141-2760686

E mail: csujaipur@gmail.com website: <http://csu-jaipur.edu.in/>

Central Sanskrit University, Jaipur Campus

Established by an Act of Parliament

Under Ministry of Education

Government of India

Summary of the Feedback Analysis

National Assessment and Accreditation Council (NAAC)

Department of Jain Darshan

INDEX

S No.	Feedback Summary	Page. No.
1.	Analysis and Graph of Students Feedback	3-42
2.	Analysis and Graph of Parents Feedback	43-48
3.	Analysis and Graph of Alumni Feedback	49-54
4.	Analysis and Graph of Employers Feedback	55-64
5.	Analysis and Graph of Teachers Feedback	65-74

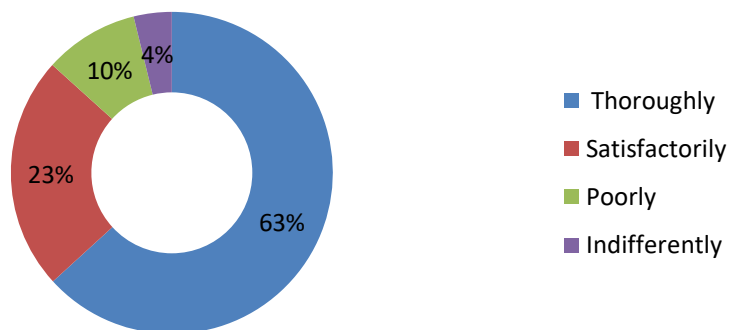
Analysis and Graph of Students Feedback

In this feedback form a special four to five-point scales on the curriculum is developed. For students, it addressed curriculum and its learning related issues in terms of quality, competence, skills and professionalism. This feedback also considers other issues like delivery of curriculum by teachers.

Students Feedback 2021-22

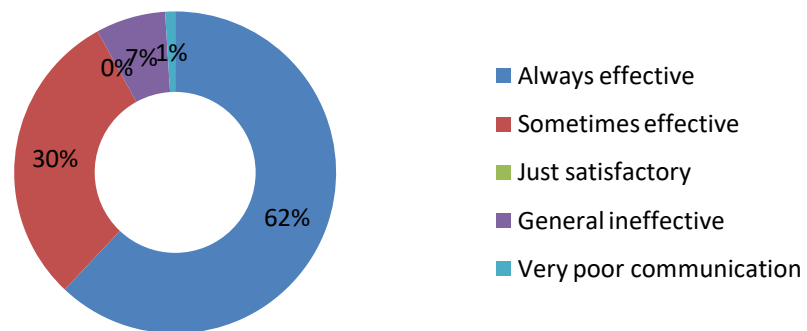
Q1 How well did the teachers prepare for the classes?	
Thoroughly	63.22
Satisfactorily	23.47
Poorly	9.49
Indifferently	3.82

Q1 How well did the teachers prepare for the classes?



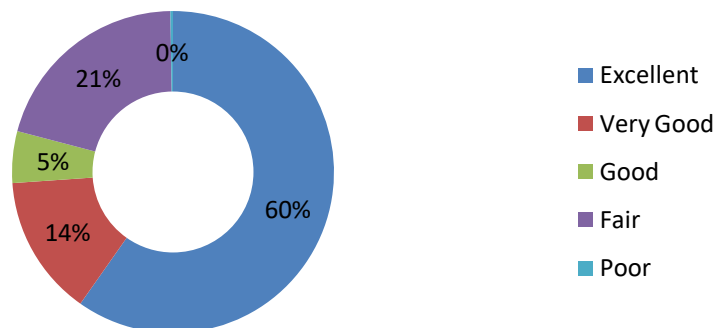
Q2 How well were the teachers able to communicate?	
Always effective	62.04
Sometimes effective	29.96
Just satisfactory	0
General ineffective	7
Very poor communication	1

Q2 How well were the teachers able to communicate?



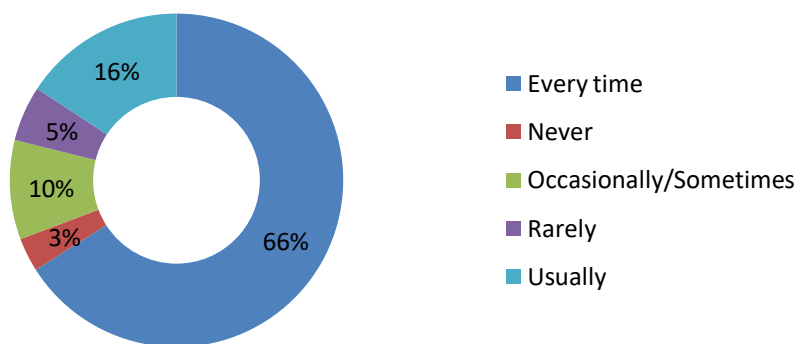
Q3 The teacher's approach to teaching can best be described as	
Excellent	59.16
Very Good	14
Good	5.14
Fair	20.44
Poor	0.26

Q3 The teacher's approach to teaching can best be described as



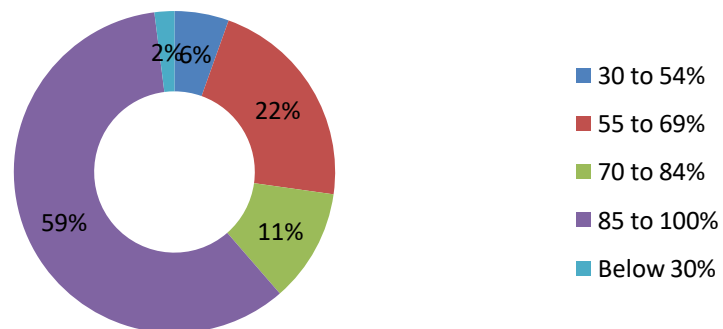
Q4 The teachers illustrate the concepts through examples and applications	
Every time	65.98
Never	3.28
Occasionally/Sometimes	9.63
Rarely	5.37
Usually	15.74

Q4 The teachers illustrate the concepts through examples and applications



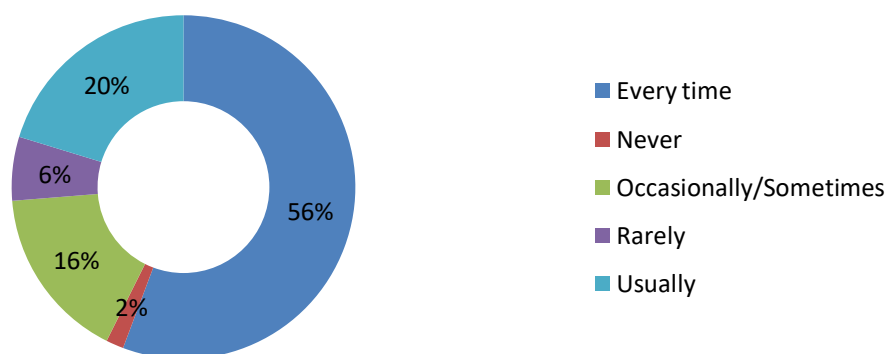
Q5 How much of the syllabus was covered in the class?	
30 to 54%	5.46
55 to 69%	21.76
70 to 84%	11.41
85 to 100%	59.37
Below 30%	2

Q5 How much of the syllabus was covered in the class?



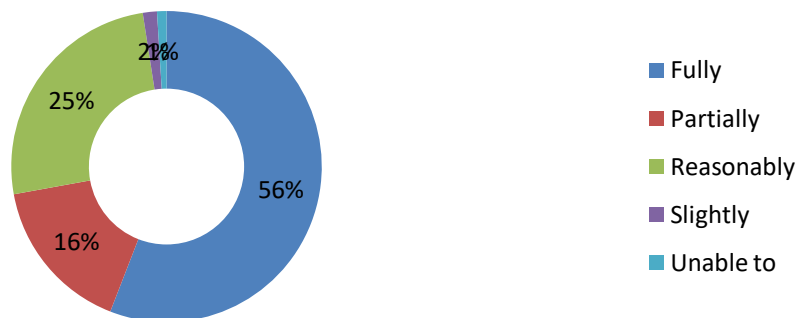
Q6 Teachers inform you about your expected competencies, course outcomes and program outcomes	
Every time	55.72
Never	1.66
Occasionally/Sometimes	16.35
Rarely	6
Usually	20.27

Q6 Teachers inform you about your expected competencies, course outcomes and program outcomes



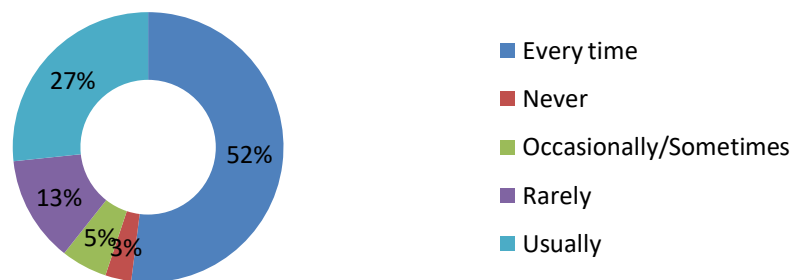
Q7 The teachers identify your strengths and encourage you with providing right level of challenges	
Fully	55.89
Partially	16.25
Reasonably	25.41
Slightly	1.47
Unable to	0.98

Q7 The teachers identify your strengths and encourage you with providing right level of challenges



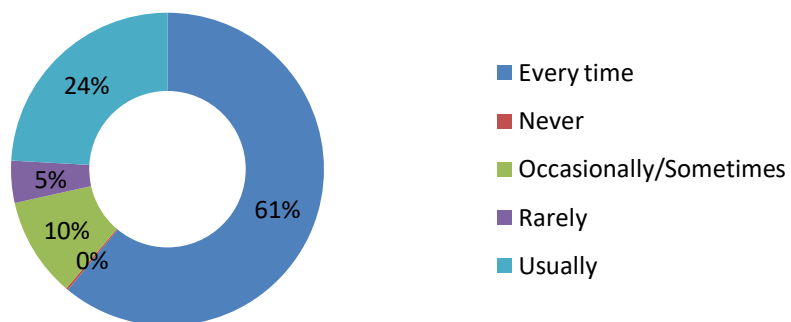
Q8 Teachers are able to identify your weaknesses and help you to overcome them	
Every time	52
Never	3.12
Occasionally/Sometimes	5.54
Rarely	12.68
Usually	26.66

Q8 Teachers are able to identify your weaknesses and help you to overcome them



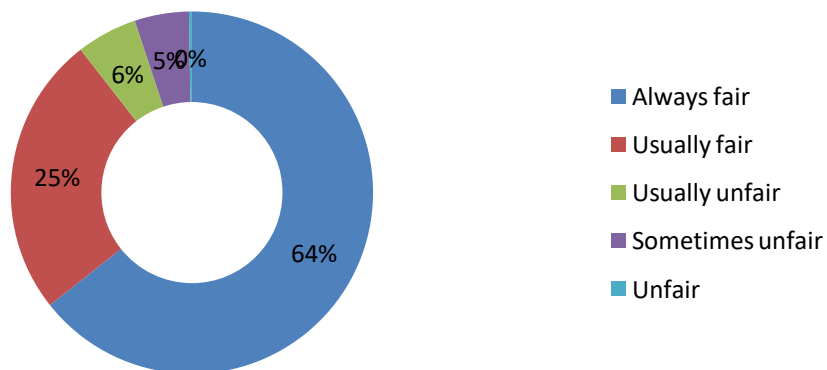
Q9 Teachers encourage you to participate in extracurricular activities	
Every time	60.98
Never	0.23
Occasionally/Sometimes	10.32
Rarely	4.35
Usually	24.12

Q9 Teachers encourage you to participate in extracurricular activities



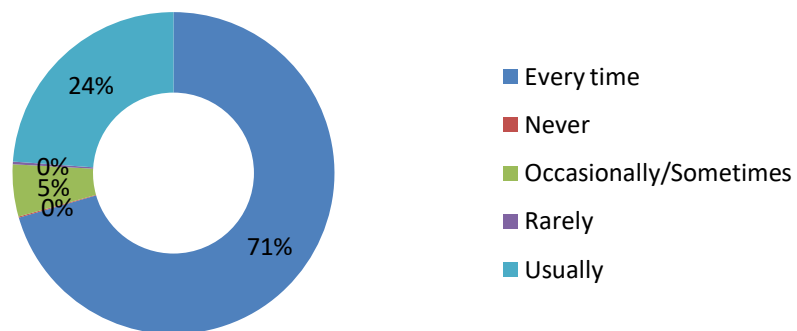
Q10 Fairness of the internal evaluation process by the teachers	
Always fair	64.33
Usually fair	25.14
Usually unfair	5.42
Sometimes unfair	4.85
Unfair	0.26

Q10 Fairness of the internal evaluation process by the teachers



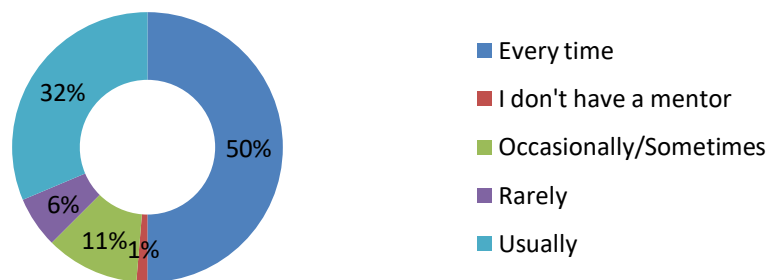
Q11 Was your performance in assignments discussed with you?	
Every time	70.53
Never	0.11
Occasionally/Sometimes	5.23
Rarely	0.27
Usually	23.86

Q11 Was your performance in assignments discussed with you?



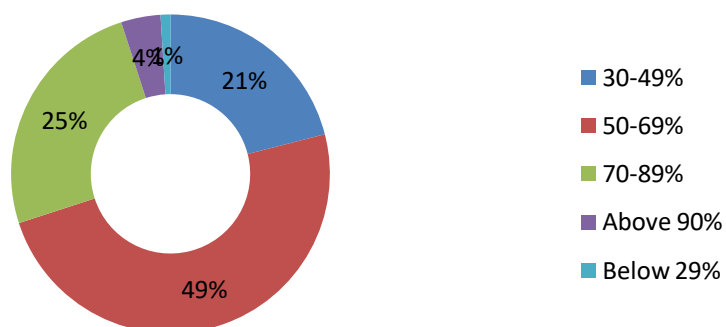
Q12 Your mentor does a necessary follow-up with an assigned task to you	
Every time	51.02
I don't have a mentor	1.32
Occasionally/Sometimes	11.43
Rarely	6.25
Usually	31.98

Q12 Your mentor does a necessary follow-up with an assigned task to you



Q13 What percentage of teachers use ICT tools such as LCD projectors, Multimedia, etc. while teaching	
30-49%	21
50-69%	49
70-89%	25
Above 90%	4
Below 29%	1

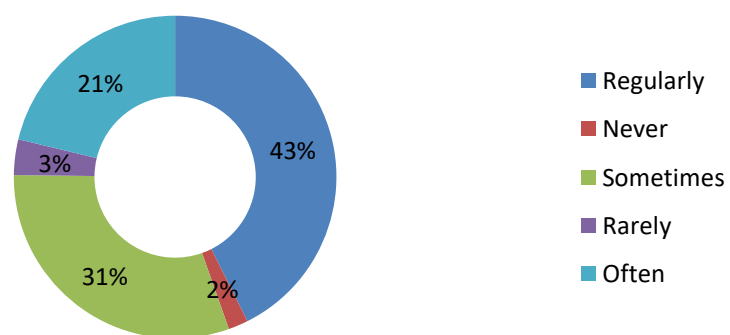
Q13 What percentage of teachers use ICT tools such as LCD projectors, Multimedia, etc. while teaching



Q14 The institute takes an active interest in promoting internship, student exchange, field visit opportunities for students

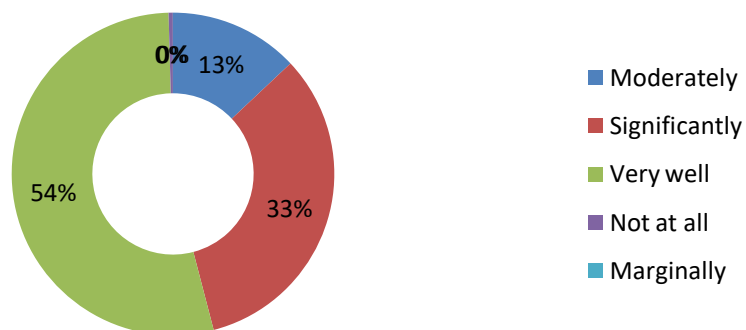
Regularly	42.6
Never	1.99
Sometimes	30.6
Rarely	3.57
Often	21.24

Q14 The institute takes an active interest in promoting internship, student exchange, field visit opportunities for students



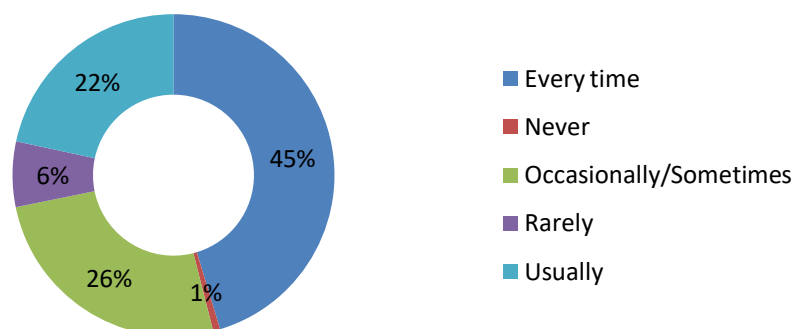
Q15 The teaching and mentoring process in your institution facilitates you in cognitive, social and emotional growth	
Moderately	12.99
Significantly	32.95
Very well	53.62
Not at all	0.43
Marginally	0.01

Q15 The teaching and mentoring process in your institution facilitates you in cognitive, social and emotional growth



Q16 The institution provides multiple opportunities to learn and grow	
Every time	45.32
Never	0.71
Occasionally/Sometimes	25.78
Rarely	6.56
Usually	21.63

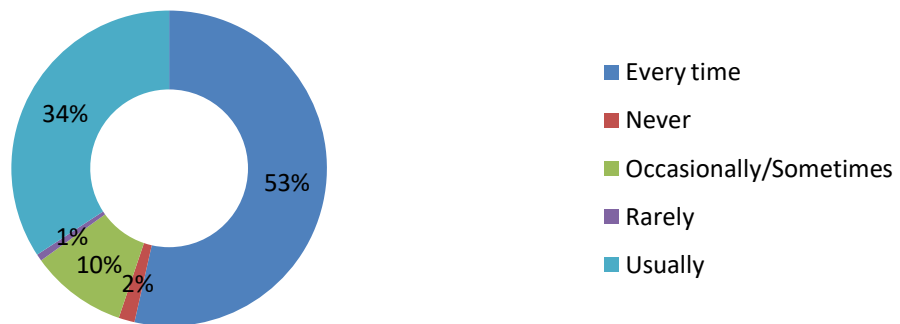
Q16 The institution provides multiple opportunities to learn and grow



Q17 The institution makes effort to engage students in the monitoring, review, and continuous quality improvement of the teaching learning process

Every time	53.53
Never	1.64
Occasionally/Sometimes	9.9
Rarely	0.71
Usually	34.22

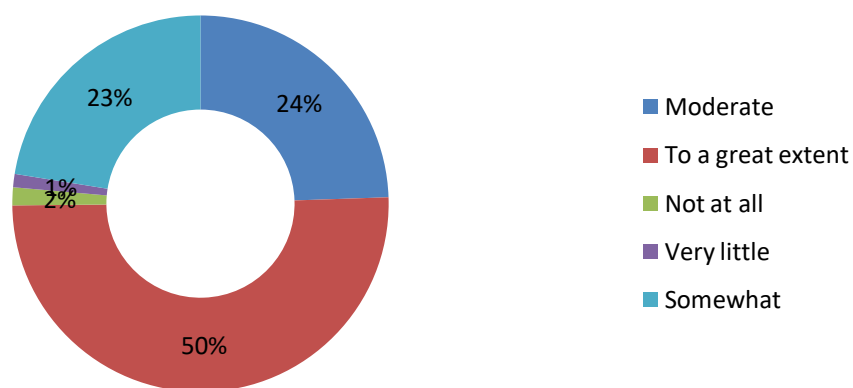
Q17 The institution makes effort to engage students in the monitoring, review, and continuous quality improvement of the teaching learning process



Q18 The institute/ teachers use student centric methods, such as experiential learning, participative learning, and problem-solving methodologies for enhancing learning experiences

Moderate	24.46
To a great extent	50.39
Not at all	1.54
Very little	1.14
Somewhat	22.47

Q18 The institute/ teachers use student centric methods, such as experiential learning, participative learning, and problem-solving methodologies for enhancing learning experiences



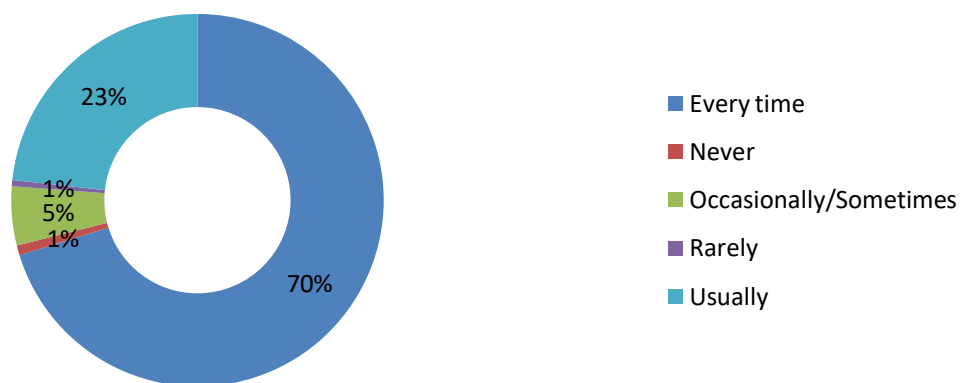
Q19 Efforts are made by the institute/ teachers to inculcate soft skills, life skills and employability skills to make you ready for the world of work	
To a great extent	54.31
Moderate	26.75
Very little	2.24
Somewhat	15.37
Not at all	1.33

Q19 Efforts are made by the institute/ teachers to inculcate soft skills, life skills and employability skills to make you ready for the world of work



Q20 The overall quality of teaching-learning process in your institute is very good	
Every time	70.23
Never	0.86
Occasionally/Sometimes	5.11
Rarely	0.53
Usually	23.27

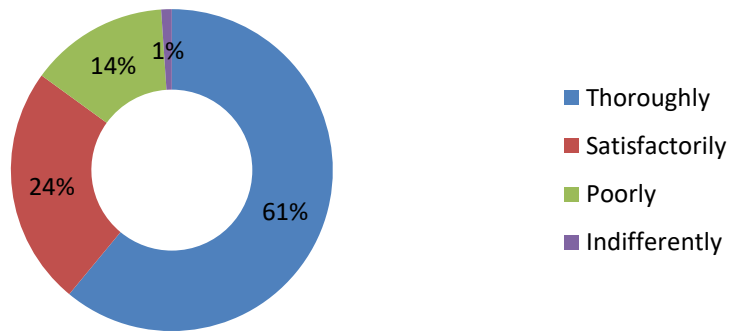
Q20 The overall quality of teaching-learning process in your institute is very good



Feedback of Students 2020-21

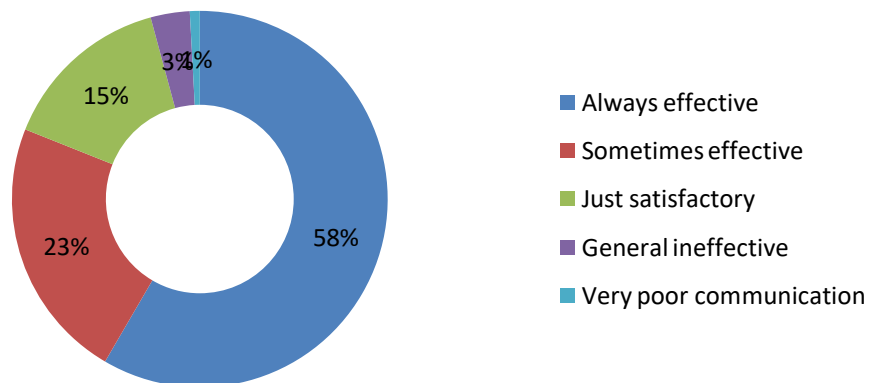
Q1 How well did the teachers prepare for the classes?	
Thoroughly	61
Satisfactorily	24
Poorly	13.94
Indifferently	1.06

Q1 How well did the teachers prepare for the classes?



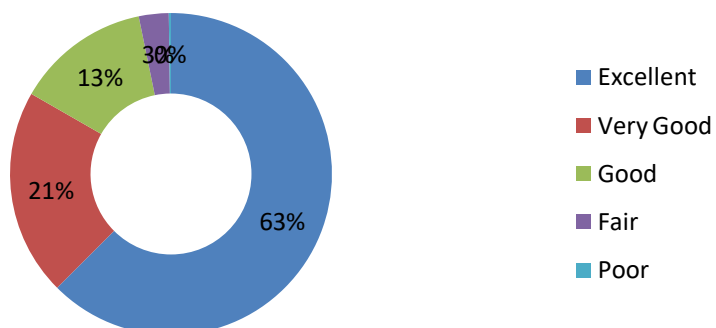
Q2 How well were the teachers able to communicate?	
Always effective	58.4
Sometimes effective	22.64
Just satisfactory	14.75
General ineffective	3.36
Very poor communication	0.85

Q2 How well were the teachers able to communicate?



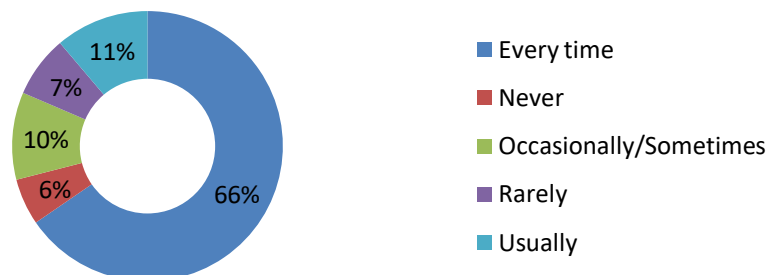
Q3 The teacher's approach to teaching can best be described as	
Excellent	62.51
Very Good	20.78
Good	13.49
Fair	3
Poor	0.22

Q3 The teacher's approach to teaching can best be described as



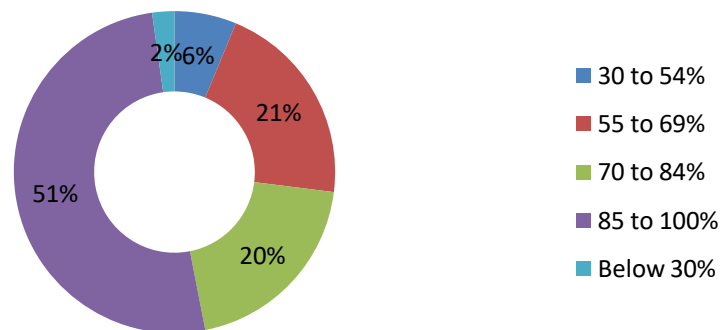
Q4 The teachers illustrate the concepts through examples and applications	
Every time	65.44
Never	5.56
Occasionally/Sometimes	10.44
Rarely	7.36
Usually	11.2

Q4 The teachers illustrate the concepts through examples and applications



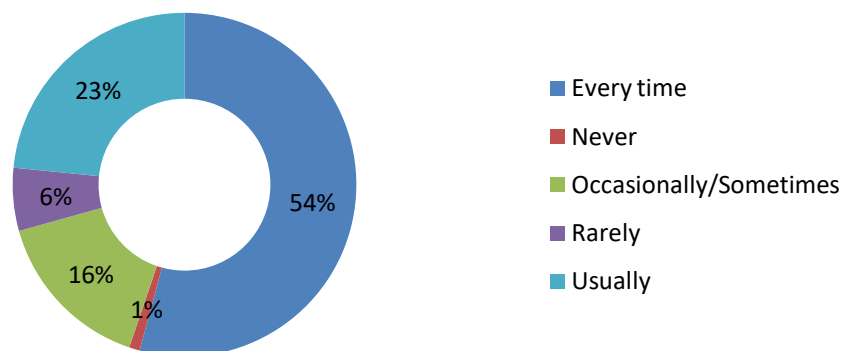
Q5 How much of the syllabus was covered in the class?	
30 to 54%	6.23
55 to 69%	20.76
70 to 84%	19.94
85 to 100%	50.84
Below 30%	2.23

Q5 How much of the syllabus was covered in the class?



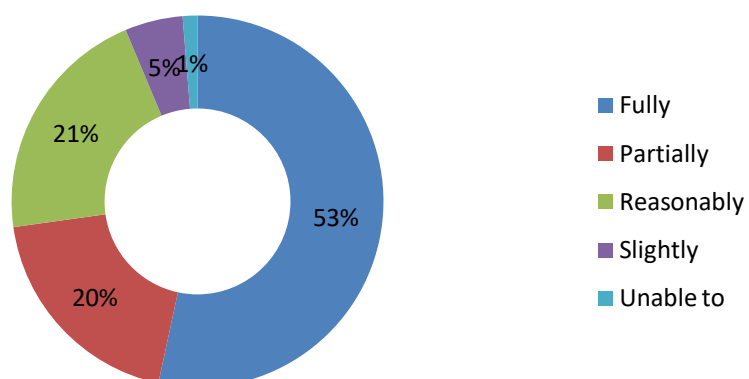
Q6 Teachers inform you about your expected competencies, course outcomes and program outcomes	
Every time	54.21
Never	1
Occasionally/Sometimes	15.45
Rarely	5.92
Usually	23.42

Q6 Teachers inform you about your expected competencies, course outcomes and program outcomes



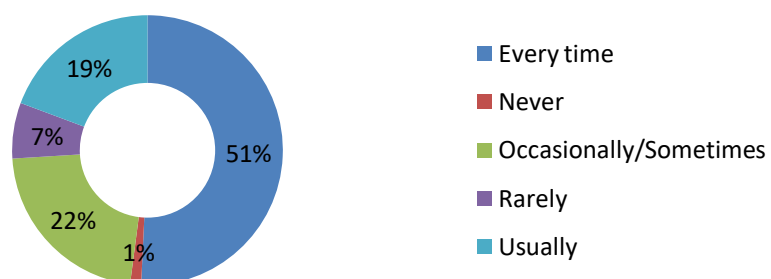
Q7 The teachers identify your strengths and encourage you with providing right level of challenges	
Fully	53.38
Partially	19.41
Reasonably	20.89
Slightly	5.04
Unable to	1.28

Q7 The teachers identify your strengths and encourage you with providing right level of challenges



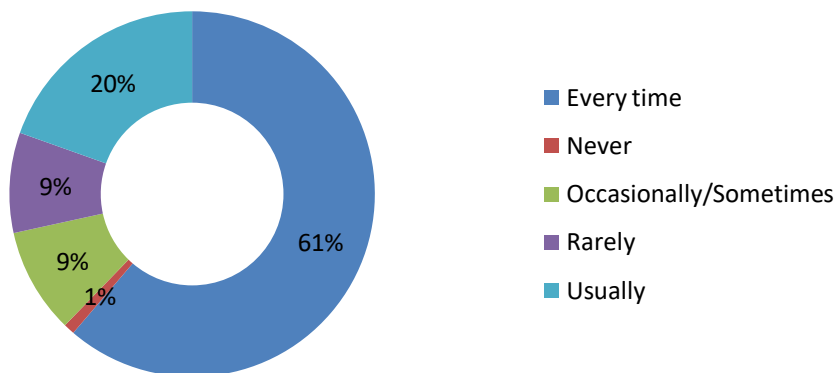
Q8 Teachers are able to identify your weaknesses and help you to overcome them	
Every time	50.75
Never	1.31
Occasionally/Sometimes	21.96
Rarely	6.66
Usually	19.32

Q8 Teachers are able to identify your weaknesses and help you to overcome them



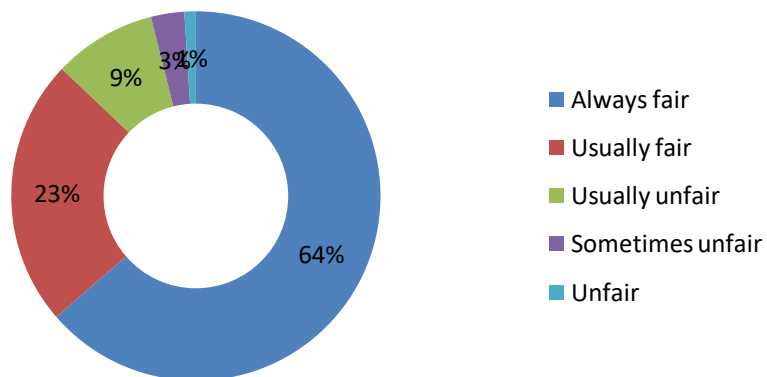
Q9 Teachers encourage you to participate in extracurricular activities	
Every time	61.27
Never	0.98
Occasionally/Sometimes	9.32
Rarely	8.87
Usually	19.56

Q9 Teachers encourage you to participate in extracurricular activities



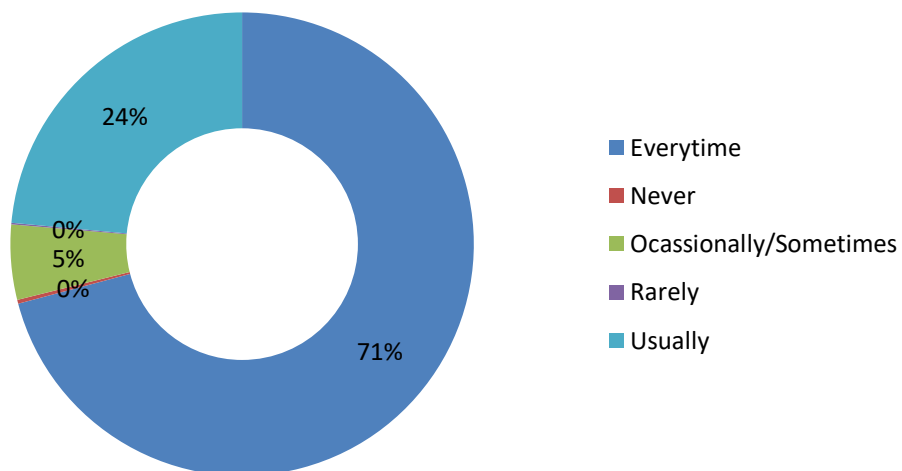
Q10 Fairness of the internal evaluation process by the teachers	
Always fair	63.64
Usually fair	23.44
Usually unfair	9
Sometimes unfair	2.92
Unfair	1

Q10 Fairness of the internal evaluation process by the teachers



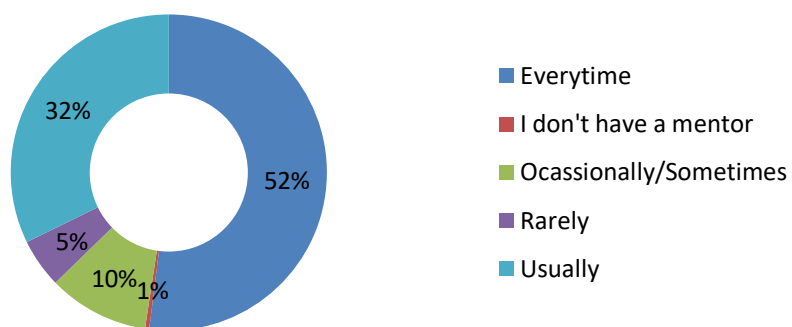
Q11 Was your performance in assignments discussed with you?	
Every time	70.86
Never	0.27
Occasionally/Sometimes	5.23
Rarely	0.11
Usually	23.53

Q11 Was your performance in assignments discussed with you?



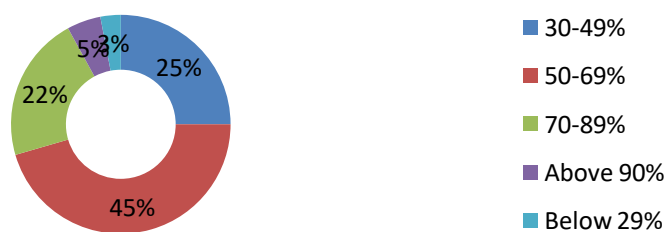
Q12 Your mentor does a necessary follow-up with an assigned task to you	
Every time	51.98
I don't have a mentor	0.43
Occasionally/Sometimes	10.32
Rarely	5.02
Usually	32.25

Q12 Your mentor does a necessary follow-up with an assigned task to you



Q13 What percentage of teachers use ICT tools such as LCD projectors, Multimedia, etc. while teaching	
30-49%	25
50-69%	45.5
70-89%	21.5
Above 90%	5
Below 29%	3

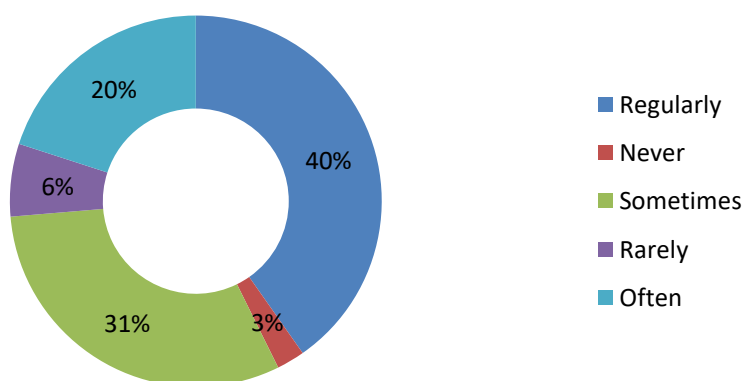
Q13 What percentage of teachers use ICT tools such as LCD projectors, Multimedia, etc. while teaching



Q14 The institute takes an active interest in promoting internship, student exchange, field visit opportunities for students

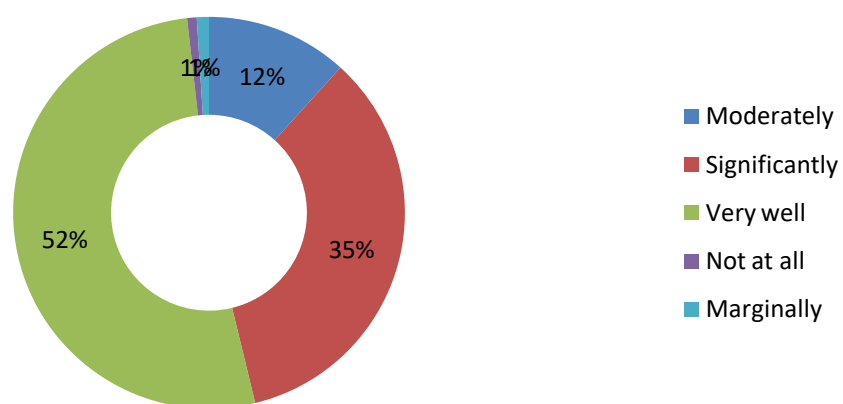
Regularly	40.24
Never	2.44
Sometimes	30.99
Rarely	6.32
Often	20.01

Q14 The institute takes an active interest in promoting internship, student exchange, field visit opportunities for students



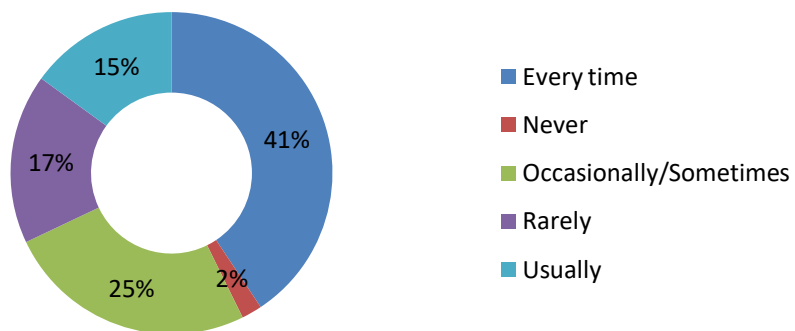
Q15 The teaching and mentoring process in your institution facilitates you in cognitive, social and emotional growth	
Moderately	11.71
Significantly	34.50
Very well	52
Not at all	0.79
Marginally	1

Q15 The teaching and mentoring process in your institution facilitates you in cognitive, social and emotional growth



Q16 The institution provides multiple opportunities to learn and grow	
Every time	40.65
Never	2.06
Occasionally/Sometimes	25.24
Rarely	17.05
Usually	15

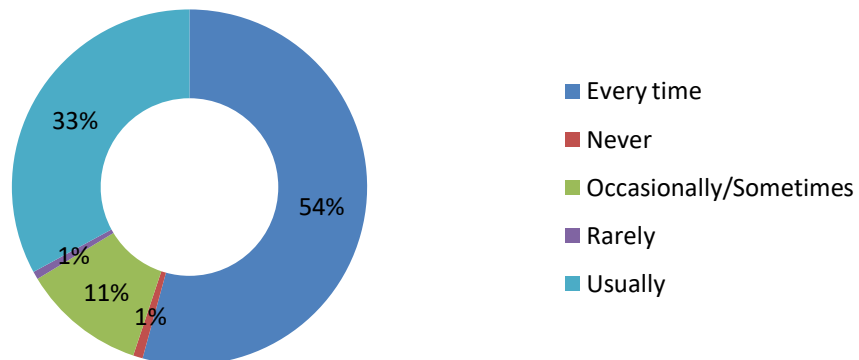
Q16 The institution provides multiple opportunities to learn and grow



Q17 The institution makes effort to engage students in the monitoring, review, and continuous quality improvement of the teaching learning process

Every time	54.26
Never	0.87
Occasionally/Sometimes	11.22
Rarely	0.72
Usually	32.93

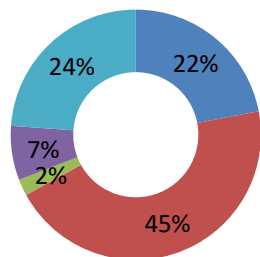
Q17 The institution makes effort to engage students in the monitoring, review, and continuous quality improvement of the teaching learning process



Q18 The institute/ teachers use student centric methods, such as experiential learning, participative learning, and problem-solving methodologies for enhancing learning experiences

Moderate	22
To a great extent	45
Not at all	2.13
Very little	7
Somewhat	23.87

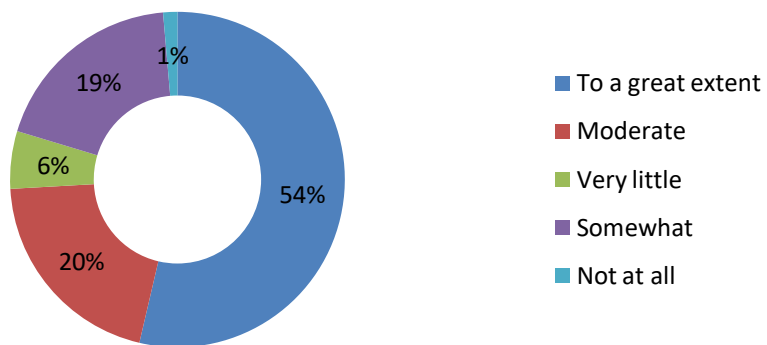
Q18 The institute/ teachers use student centric methods, such as experiential learning, participative learning, and problem-solving methodologies for enhancing learning experiences



- Moderate
- To a great extent
- Not at all
- Very little
- Somewhat

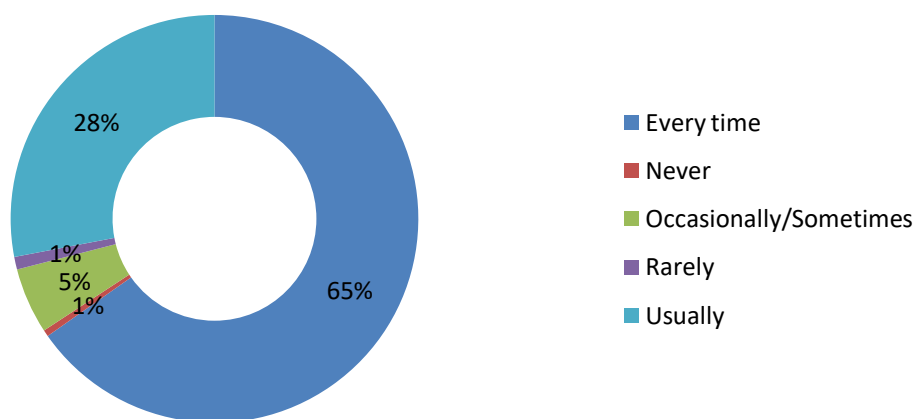
Q19 Efforts are made by the institute/ teachers to inculcate soft skills, life skills and employability skills to make you ready for the world of work	
To a great extent	53.65
Moderate	20.46
Very little	5.56
Somewhat	18.96
Not at all	1.37

Q19 Efforts are made by the institute/ teachers to inculcate soft skills, life skills and employability skills to make you ready for the world of work



Q20 The overall quality of teaching-learning process in your institute is very good	
Every time	65.25
Never	0.52
Occasionally/Sometimes	5.23
Rarely	1
Usually	28

Q20 The overall quality of teaching-learning process in your institute is very good

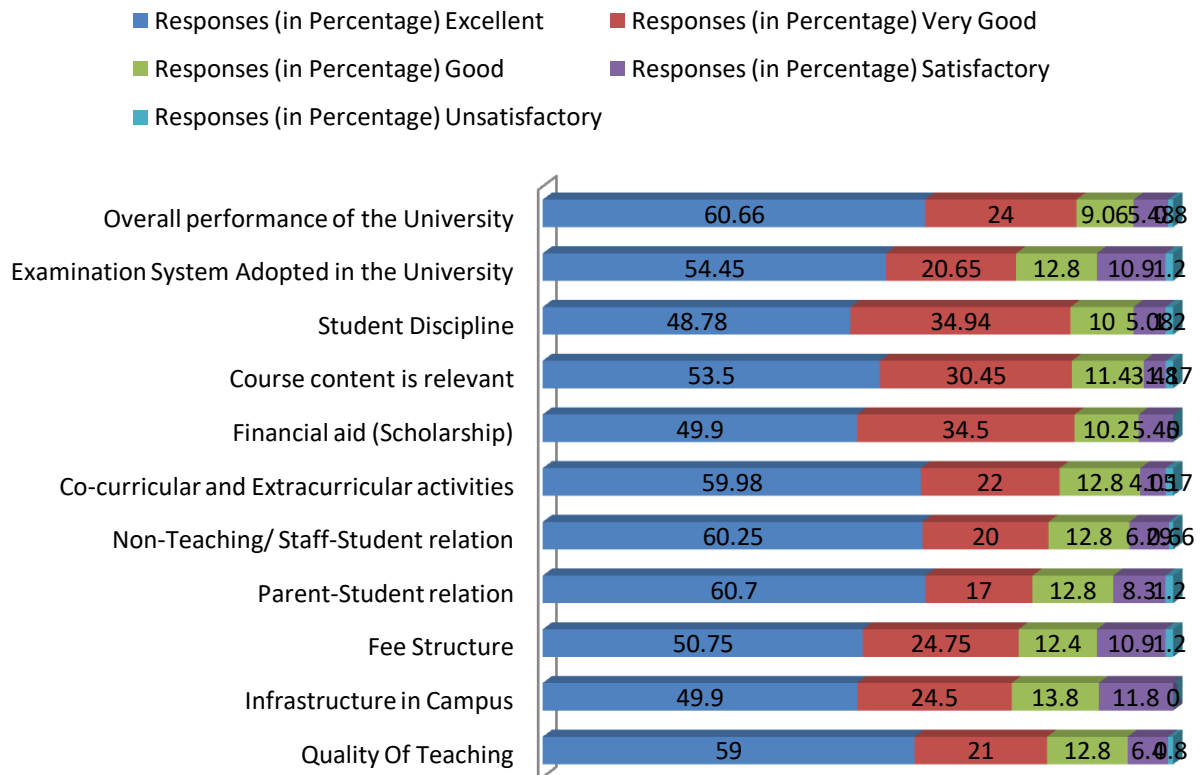


Analysis and graph of Parents feedback Session 2021-22

We have received the total feedback from the parents on the current content of the syllabus that was helped students' future.

<i>Parents feedback of Session (2021-22)</i>					
Statement	Responses (in Percentage)				
	Excellent	Very Good	Good	Satisfactory	Unsatisfactory
Quality Of Teaching	59	21	12.8	6.4	0.8
Infrastructure in Campus	49.9	24.5	13.8	11.8	0
Fee Structure	50.75	24.75	12.4	10.9	1.2
Parent-Student relation	60.7	17	12.8	8.3	1.2
Non-Teaching/ Staff-Student relation	60.25	20	12.8	6.29	0.66
Co-curricular and Extracurricular activities	59.98	22	12.8	4.05	1.17
Financial aid (Scholarship)	49.9	34.5	10.2	5.45	0
Course content is relevant	53.5	30.45	11.4	3.48	1.17
Student Discipline	48.78	34.94	10	5.08	1.2
Examination System Adopted in the University	54.45	20.65	12.8	10.9	1.2
Overall performance of the University	60.66	24	9.06	5.48	0.8

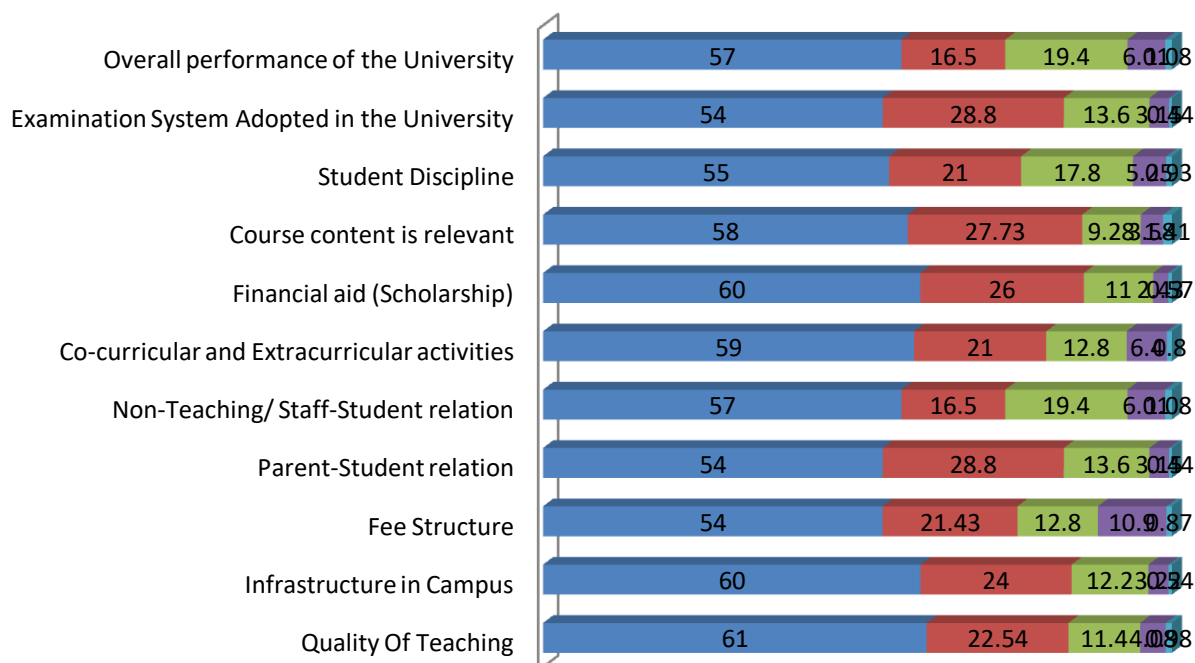
Parents feedback of Session (2021-22)



<i>Parents feedback of Session (2020-21)</i>					
Statement	Responses (in Percentage)				
	Excellent	Very Good	Good	Satisfactory	Unsatisfactory
Quality Of Teaching	61	22.54	11.4	4.08	0.98
Infrastructure in Campus	60	24	12.2	3.22	0.54
Fee Structure	54	21.43	12.8	10.9	0.87
Parent-Student relation	54	28.8	13.6	3.15	0.44
Non-Teaching/ Staff-Student relation	57	16.5	19.4	6.01	1.08
Co-curricular and Extracurricular activities	59	21	12.8	6.4	0.8
Financial aid (Scholarship)	60	26	11	2.43	0.57
Course content is relevant	58	27.73	9.28	3.58	1.41
Student Discipline	55	21	17.8	5.25	0.93
Examination System Adopted in the University	54	28.8	13.6	3.15	0.44
Overall performance of the University	57	16.5	19.4	6.01	1.08

Parents feedback of Session (2020-21)

- Responses (in Percentage) Excellent
- Responses (in Percentage) Very Good
- Responses (in Percentage) Good
- Responses (in Percentage) Satisfactory
- Responses (in Percentage) Unsatisfactory

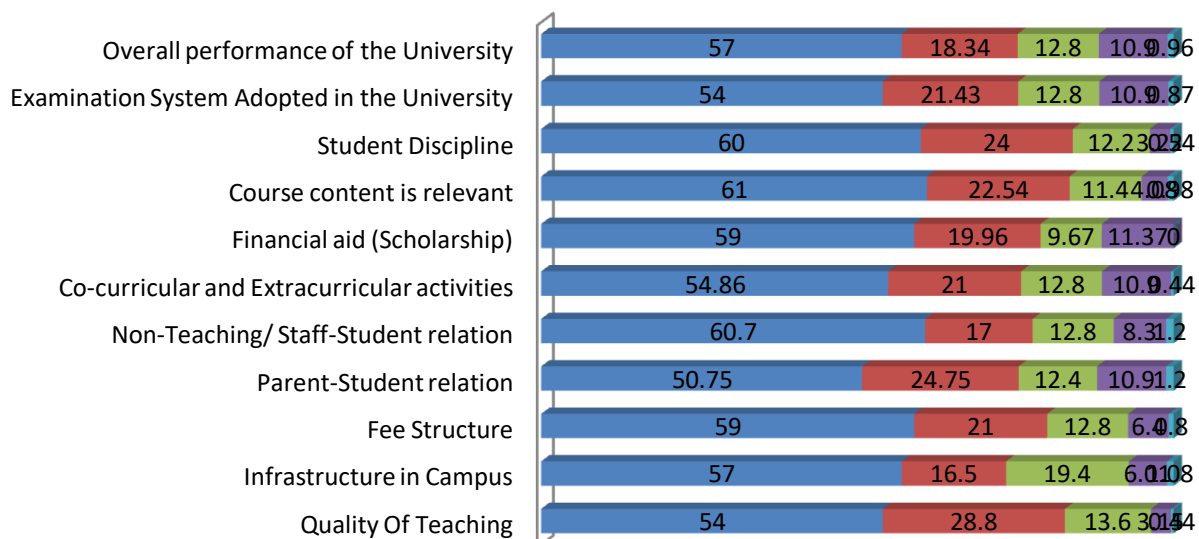


Parents feedback of Session (2019-20)

Statement	Responses (in Percentage)				
	Excellent	Very Good	Good	Satisfactory	Unsatisfactory
Quality Of Teaching	54	28.8	13.6	3.15	0.44
Infrastructure in Campus	57	16.5	19.4	6.01	1.08
Fee Structure	59	21	12.8	6.4	0.8
Parent-Student relation	50.75	24.75	12.4	10.9	1.2
Non-Teaching/ Staff-Student relation	60.7	17	12.8	8.3	1.2
Co-curricular and Extracurricular activities	54.86	21	12.8	10.9	0.44
Financial aid (Scholarship)	59	19.96	9.67	11.37	0
Course content is relevant	61	22.54	11.4	4.08	0.98
Student Discipline	60	24	12.2	3.22	0.54
Examination System Adopted in the University	54	21.43	12.8	10.9	0.87
Overall performance of the University	57	18.34	12.8	10.9	0.96

Parents feedback of Session (2019-20)

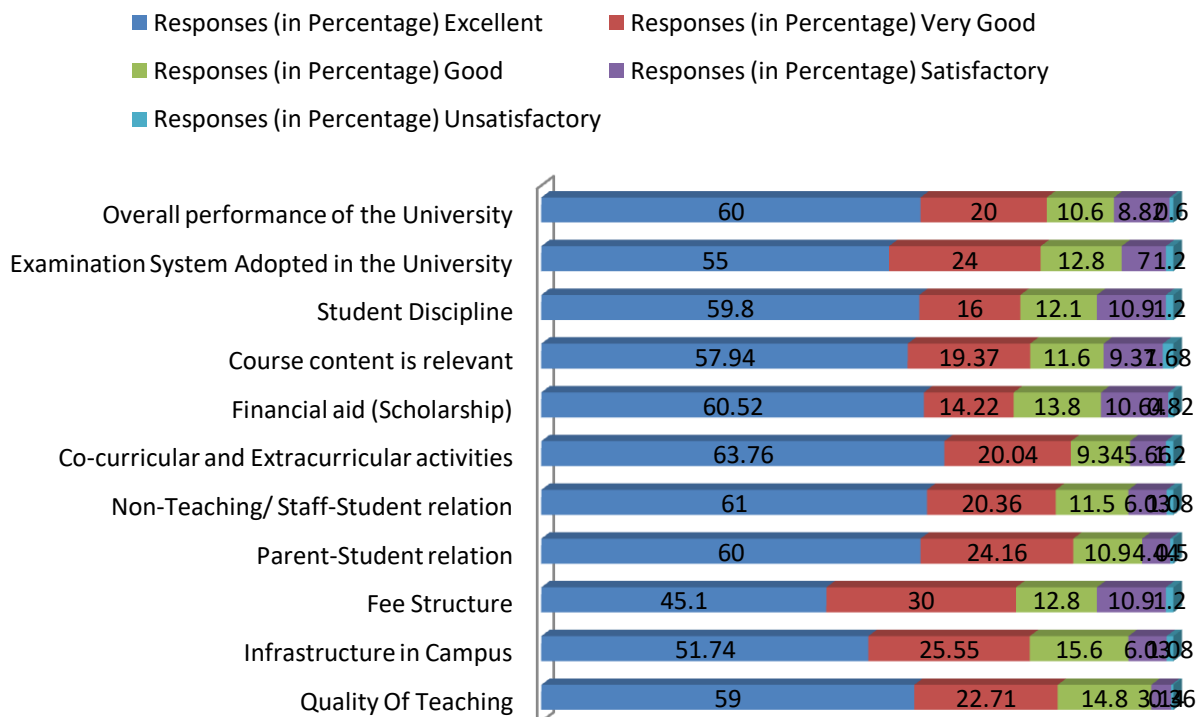
- Responses (in Percentage) Excellent
- Responses (in Percentage) Very Good
- Responses (in Percentage) Good
- Responses (in Percentage) Satisfactory
- Responses (in Percentage) Unsatisfactory



Parents feedback of Session (2018-19)

Statement	Responses (in Percentage)				
	Excellent	Very Good	Good	Satisfactory	Unsatisfactory
Quality Of Teaching	59	22.71	14.8	3.14	0.36
Infrastructure in Campus	51.74	25.55	15.6	6.03	1.08
Fee Structure	45.1	30	12.8	10.9	1.2
Parent-Student relation	60	24.16	10.9	4.44	0.5
Non-Teaching/ Staff-Student relation	61	20.36	11.5	6.03	1.08
Co-curricular and Extracurricular activities	63.76	20.04	9.34	5.66	1.2
Financial aid (Scholarship)	60.52	14.22	13.8	10.64	0.82
Course content is relevant	57.94	19.37	11.6	9.37	1.68
Student Discipline	59.8	16	12.1	10.9	1.2
Examination System Adopted in the University	55	24	12.8	7	1.2
Overall performance of the University	60	20	10.6	8.82	0.6

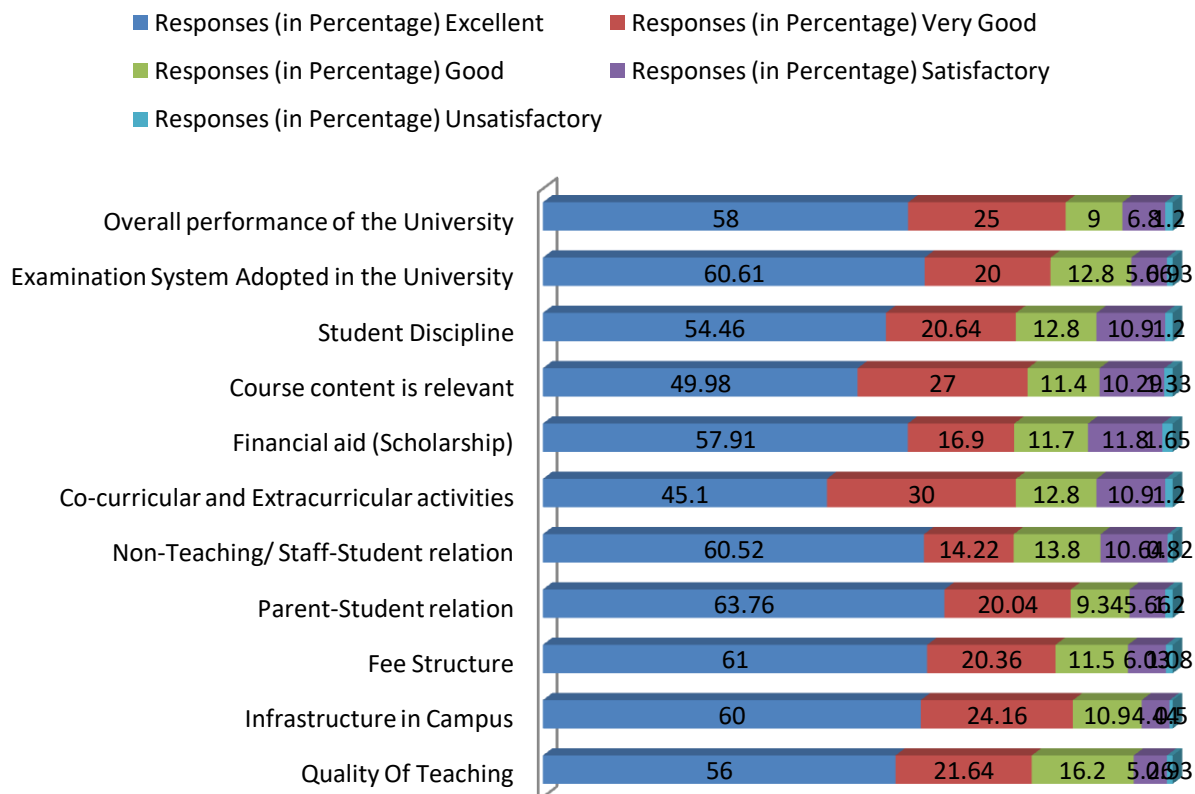
Parents feedback of Session (2018-19)



Parents feedback of Session (2017-18)

Statement	Responses (in Percentage)				
	Excellent	Very Good	Good	Satisfactory	Unsatisfactory
Quality Of Teaching	56	21.64	16.2	5.26	0.93
Infrastructure in Campus	60	24.16	10.9	4.44	0.5
Fee Structure	61	20.36	11.5	6.03	1.08
Parent-Student relation	63.76	20.04	9.34	5.66	1.2
Non-Teaching/ Staff-Student relation	60.52	14.22	13.8	10.64	0.82
Co-curricular and Extracurricular activities	45.1	30	12.8	10.9	1.2
Financial aid (Scholarship)	57.91	16.9	11.7	11.8	1.65
Course content is relevant	49.98	27	11.4	10.29	1.33
Student Discipline	54.46	20.64	12.8	10.9	1.2
Examination System Adopted in the University	60.61	20	12.8	5.66	0.93
Overall performance of the University	58	25	9	6.8	1.2

Parents feedback of Session (2017-18)



Analysis and Graph of Alumni Feedback (Session 2021-22 to 2017-18)

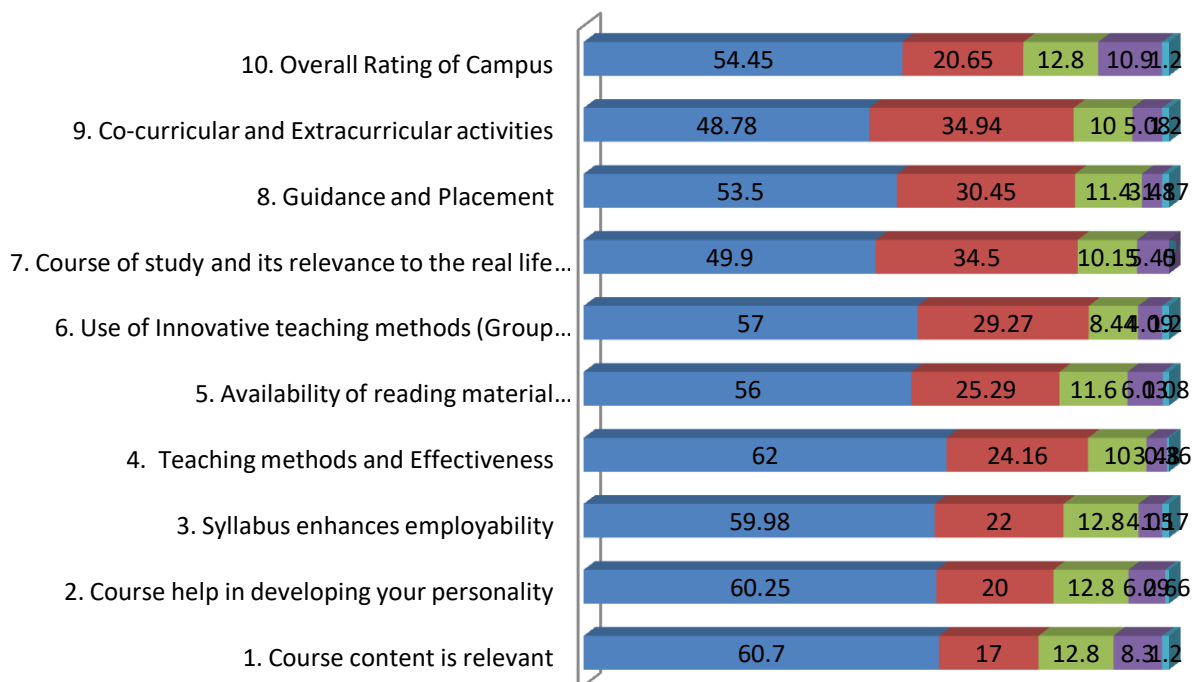
For alumni, it aimed for responses on adequateness of courses curriculum, sufficiency of syllabus content in context of current professional standards and curriculum design in context of development of self-directed learning and problem solving approach.

Alumni feedback of Session (2021-22)

Statement	Responses (in Percentage)				
	Excellent	Very Good	Good	Satisfactory	Unsatisfactory
1. Course content is relevant	60.7	17	12.8	8.3	1.2
2. Course help in developing your personality	60.25	20	12.8	6.29	0.66
3. Syllabus enhances employability	59.98	22	12.8	4.05	1.17
4. Teaching methods and Effectiveness	62	24.16	10	3.48	0.36
5. Availability of reading material (Library/Internet/Others)	56	25.29	11.6	6.03	1.08
6. Use of Innovative teaching methods (Group discussion, language practice, Use of ICT & others)	57	29.27	8.44	4.09	1.2
7. Course of study and its relevance to the real life application	49.9	34.5	10.15	5.45	0
8. Guidance and Placement	53.5	30.45	11.4	3.48	1.17
9. Co-curricular and Extracurricular activities	48.78	34.94	10	5.08	1.2
10. Overall Rating of Campus	54.45	20.65	12.8	10.9	1.2

Alumni feedback of Session (2021-22)

- Responses (in Percentage) Excellent
- Responses (in Percentage) Very Good
- Responses (in Percentage) Good
- Responses (in Percentage) Satisfactory
- Responses (in Percentage) Unsatisfactory

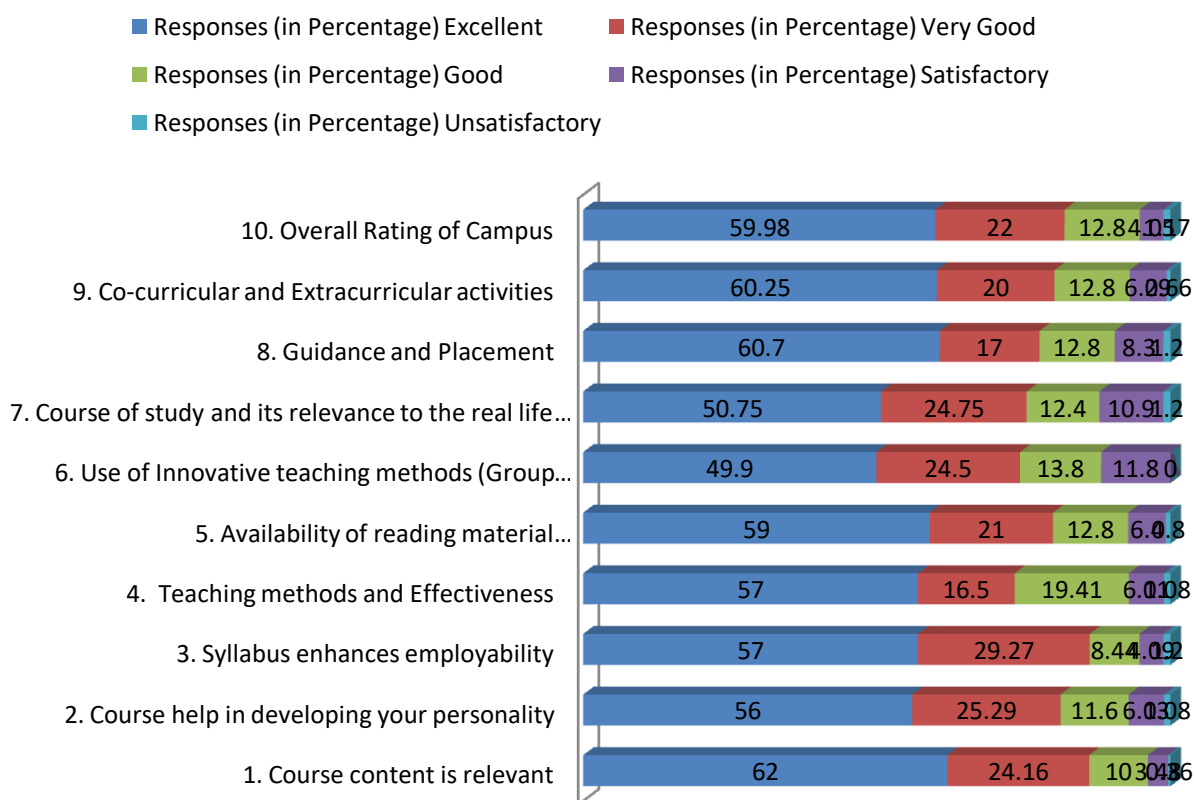


Alumni feedback of Session (2020-21)

Statement	Responses (in Percentage)				
	Excellent	Very Good	Good	Satisfactory	Unsatisfactory

1. Course content is relevant	62	24.16	10	3.48	0.36
2. Course help in developing your personality	56	25.29	11.6	6.03	1.08
3. Syllabus enhances employability	57	29.27	8.44	4.09	1.2
4. Teaching methods and Effectiveness	57	16.5	19.41	6.01	1.08
5. Availability of reading material (Library/Internet/Others)	59	21	12.8	6.4	0.8
6. Use of Innovative teaching methods (Group discussion, language practice, Use of ICT & others)	49.9	24.5	13.8	11.8	0
7. Course of study and its relevance to the real life application	50.75	24.75	12.4	10.9	1.2
8. Guidance and Placement	60.7	17	12.8	8.3	1.2
9. Co-curricular and Extracurricular activities	60.25	20	12.8	6.29	0.66
10. Overall Rating of Campus	59.98	22	12.8	4.05	1.17

Alumni feedback of Session (2020-21)

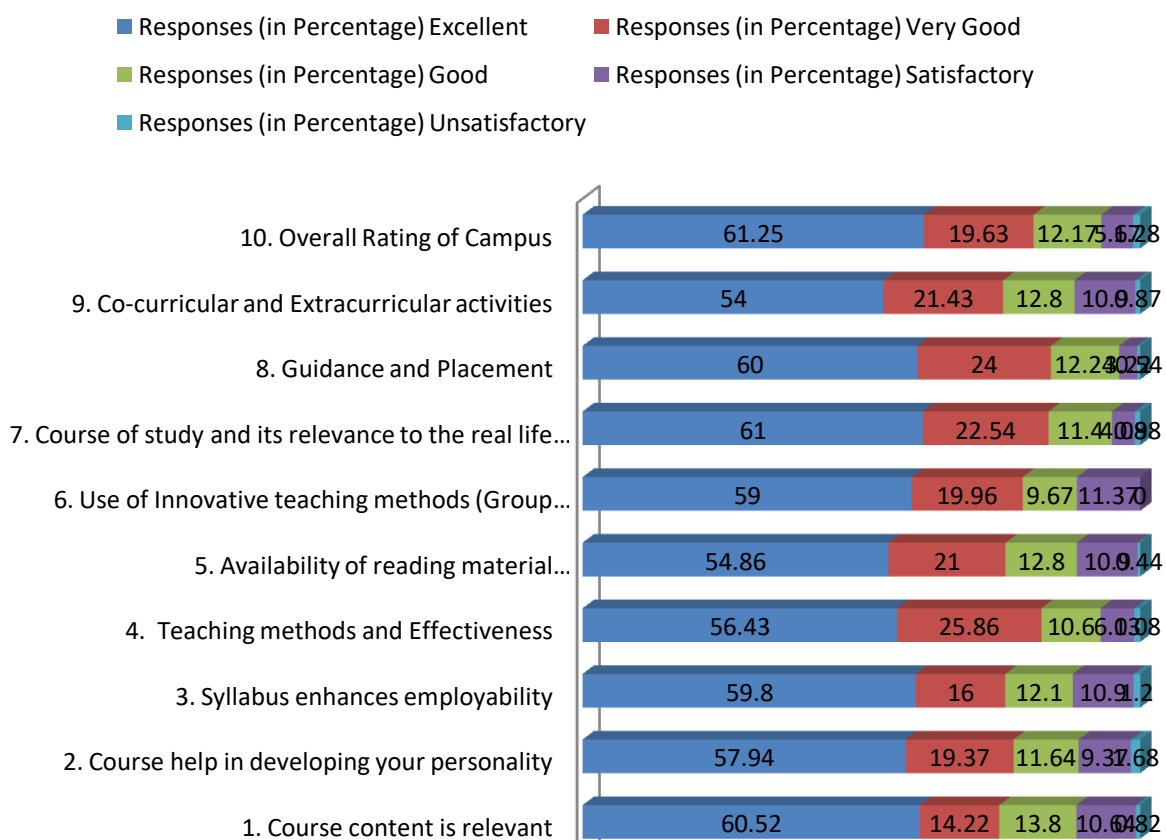


Alumni feedback of Session (2019-20)

Statement	Responses (in Percentage)				
	Excellent	Very Good	Good	Satisfactory	Unsatisfactory

1. Course content is relevant	60.52	14.22	13.8	10.64	0.82
2. Course help in developing your personality	57.94	19.37	11.64	9.37	1.68
3. Syllabus enhances employability	59.8	16	12.1	10.9	1.2
4. Teaching methods and Effectiveness	56.43	25.86	10.6	6.03	1.08
5. Availability of reading material (Library/Internet/Others)	54.86	21	12.8	10.9	0.44
6. Use of Innovative teaching methods (Group discussion, language practice, Use of ICT & others)	59	19.96	9.67	11.37	0
7. Course of study and its relevance to the real life application	61	22.54	11.4	4.08	0.98
8. Guidance and Placement	60	24	12.24	3.22	0.54
9. Co-curricular and Extracurricular activities	54	21.43	12.8	10.9	0.87
10. Overall Rating of Campus	61.25	19.63	12.17	5.67	1.28

Alumni feedback of Session (2019-20)

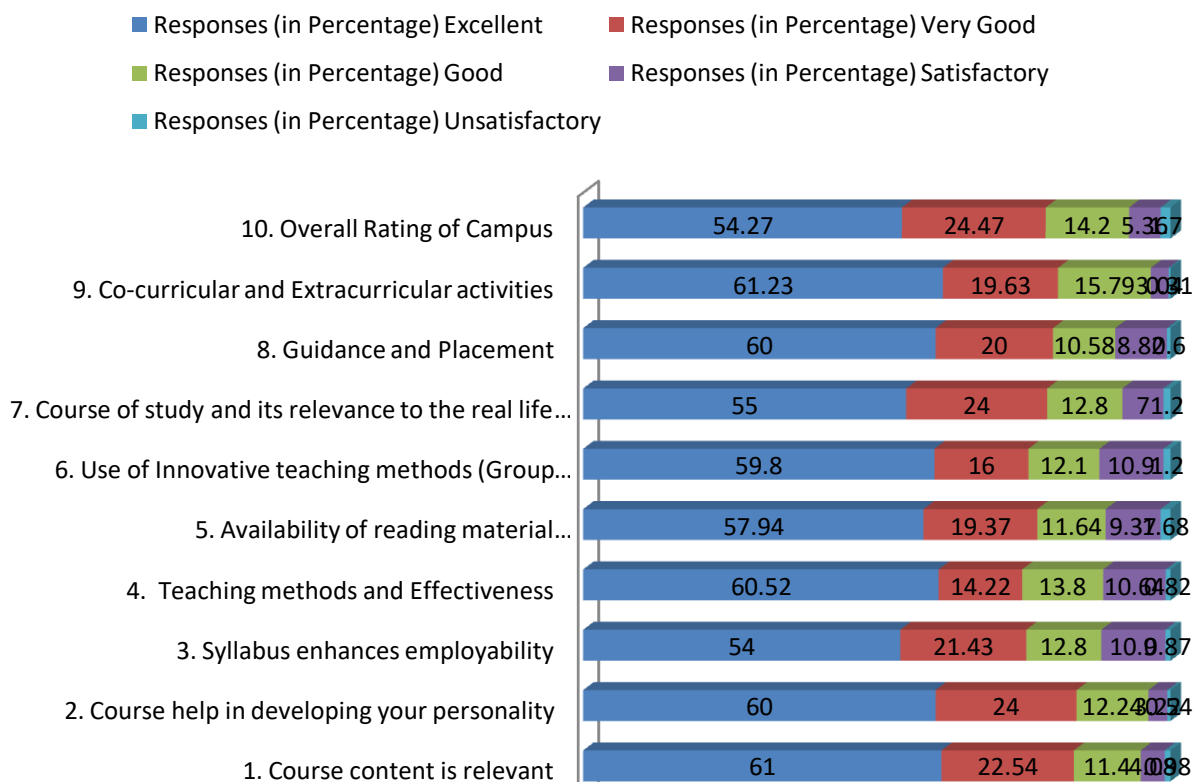


Alumni feedback of Session (2018-19)

Statement	Responses (in Percentage)				
	Excellent	Very	Good	Satisfactory	Unsatisfactor

		Good			y
1. Course content is relevant	61	22.54	11.4	4.08	0.98
2. Course help in developing your personality	60	24	12.24	3.22	0.54
3. Syllabus enhances employability	54	21.43	12.8	10.9	0.87
4. Teaching methods and Effectiveness	60.52	14.22	13.8	10.64	0.82
5. Availability of reading material (Library/Internet/Others)	57.94	19.37	11.64	9.37	1.68
6. Use of Innovative teaching methods (Group discussion, language practice, Use of ICT & others)	59.8	16	12.1	10.9	1.2
7. Course of study and its relevance to the real life application	55	24	12.8	7	1.2
8. Guidance and Placement	60	20	10.58	8.82	0.6
9. Co-curricular and Extracurricular activities	61.23	19.63	15.79	3.04	0.31
10. Overall Rating of Campus	54.27	24.47	14.2	5.36	1.7

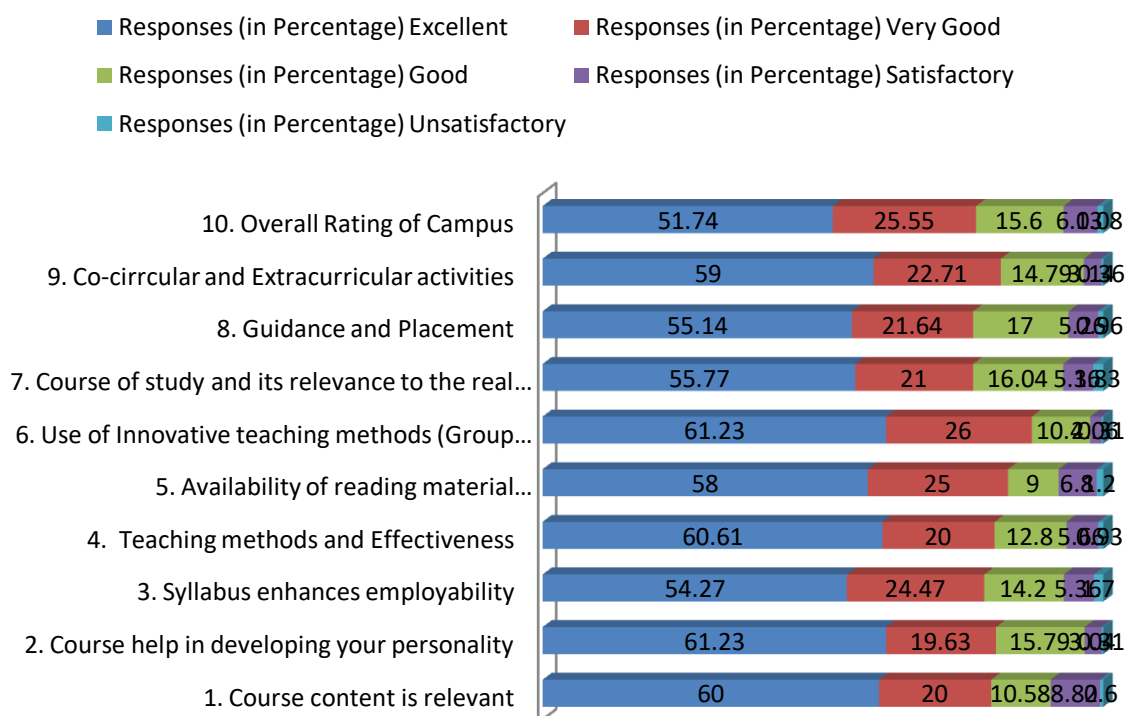
Alumni feedback of Session (2018-19)



Alumni feedback of Session (2017-18)

Statement	Responses (in Percentage)				
	Excellent	Very Good	Good	Satisfactory	Unsatisfactory
1. Course content is relevant	60	20	10.58	8.82	0.6
2. Course help in developing your personality	61.23	19.63	15.79	3.04	0.31
3. Syllabus enhances employability	54.27	24.47	14.2	5.36	1.7
4. Teaching methods and Effectiveness	60.61	20	12.8	5.66	0.93
5. Availability of reading material (Library/Internet/Others)	58	25	9	6.8	1.2
6. Use of Innovative teaching methods (Group discussion, language practice, Use of ICT & others)	61.23	26	10.4	2.06	0.31
7. Course of study and its relevance to the real life application	55.77	21	16.04	5.36	1.83
8. Guidance and Placement	55.14	21.64	17	5.26	0.96
9. Co-cirrcular and Extracurricular activities	59	22.71	14.79	3.14	0.36
10. Overall Rating of Campus	51.74	25.55	15.6	6.03	1.08
	45.1	30	12.8	10.9	1.2

Alumni feedback of Session (2017-18)

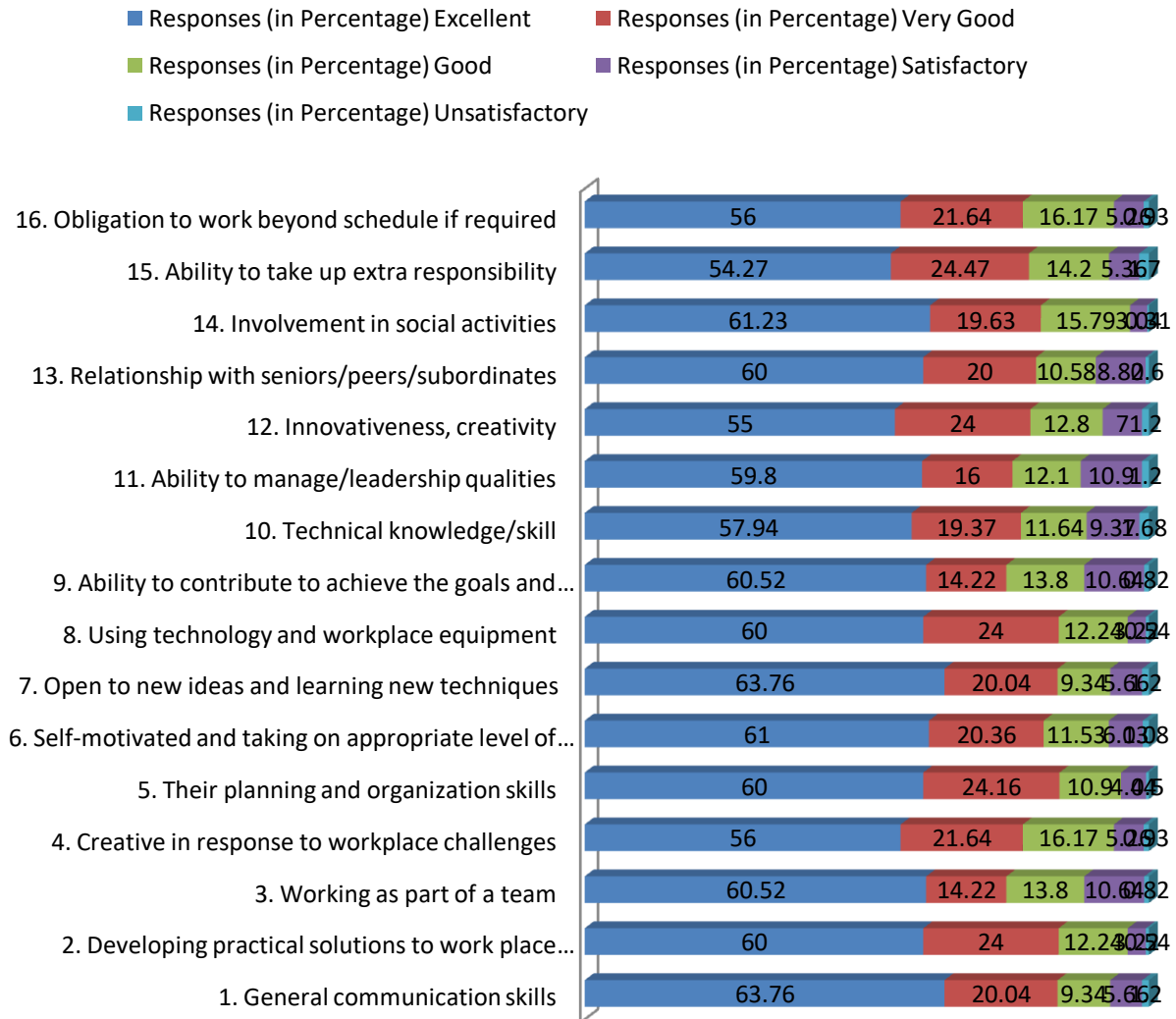


Analysis and Graph of Employers Feedback (Session 2021-22 to 2017-18)

For employers, it addressed issues like general communication skills, developing solutions to real life problems, working in a team, creative challenges to challenges, organization skills, learning of new techniques, integration of technology for work as learnt through the curriculum.

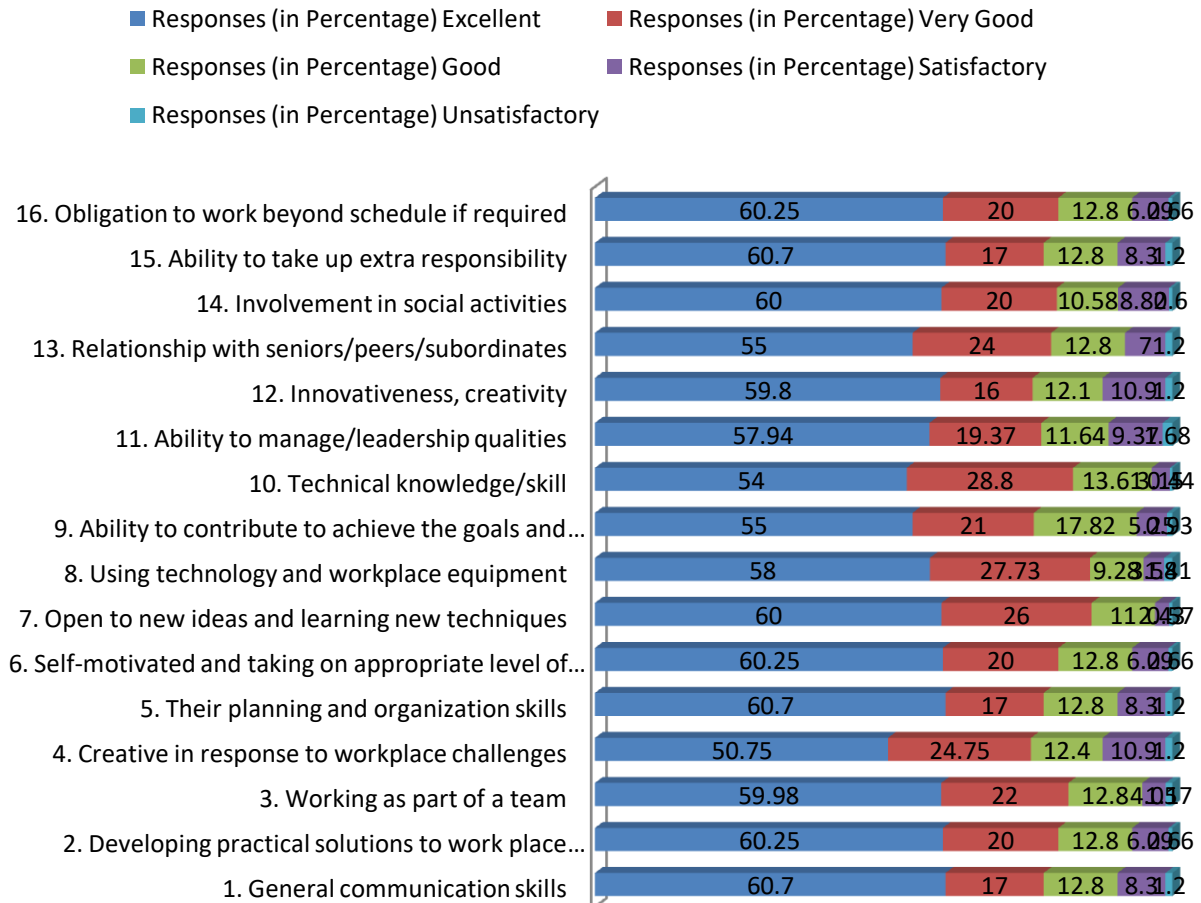
Employers feedback of Session (2021-22)					
Statement	Responses (in Percentage)				
	Excellent	Very Good	Good	Satisfactory	Unsatisfactory
1. General communication skills	63.76	20.04	9.34	5.66	1.2
2. Developing practical solutions to work place problems	60	24	12.24	3.22	0.54
3. Working as part of a team	60.52	14.22	13.8	10.64	0.82
4. Creative in response to workplace challenges	56	21.64	16.17	5.26	0.93
5. Their planning and organization skills	60	24.16	10.9	4.44	0.5
6. Self-motivated and taking on appropriate level of responsibility	61	20.36	11.53	6.03	1.08
7. Open to new ideas and learning new techniques	63.76	20.04	9.34	5.66	1.2
8. Using technology and workplace equipment	60	24	12.24	3.22	0.54
9. Ability to contribute to achieve the goals and objectives of the institution	60.52	14.22	13.8	10.64	0.82
10. Technical knowledge/skill	57.94	19.37	11.64	9.37	1.68
11. Ability to manage/leadership qualities	59.8	16	12.1	10.9	1.2
12. Innovativeness, creativity	55	24	12.8	7	1.2
13. Relationship with seniors/peers/subordinates	60	20	10.58	8.82	0.6
14. Involvement in social activities	61.23	19.63	15.79	3.04	0.31
15. Ability to take up extra responsibility	54.27	24.47	14.2	5.36	1.7
16. Obligation to work beyond schedule if required	56	21.64	16.17	5.26	0.93

Employers feedback of Session (2021-22)



Employers feedback of Session (2020-21)					
Statement	Responses (in Percentage)				
	Excellent	Very Good	Good	Satisfactory	Unsatisfactory
1. General communication skills	60.7	17	12.8	8.3	1.2
2. Developing practical solutions to work place problems	60.25	20	12.8	6.29	0.66
3. Working as part of a team	59.98	22	12.8	4.05	1.17
4. Creative in response to workplace challenges	50.75	24.75	12.4	10.9	1.2
5. Their planning and organization skills	60.7	17	12.8	8.3	1.2
6. Self-motivated and taking on appropriate level of responsibility	60.25	20	12.8	6.29	0.66
7. Open to new ideas and learning new techniques	60	26	11	2.43	0.57
8. Using technology and workplace equipment	58	27.73	9.28	3.58	1.41
9. Ability to contribute to achieve the goals and objectives of the institution	55	21	17.82	5.25	0.93
10. Technical knowledge/skill	54	28.8	13.61	3.15	0.44
11. Ability to manage/leadership qualities	57.94	19.37	11.64	9.37	1.68
12. Innovativeness, creativity	59.8	16	12.1	10.9	1.2
13. Relationship with seniors/peers/subordinates	55	24	12.8	7	1.2
14. Involvement in social activities	60	20	10.58	8.82	0.6
15. Ability to take up extra responsibility	60.7	17	12.8	8.3	1.2
16. Obligation to work beyond schedule if required	60.25	20	12.8	6.29	0.66

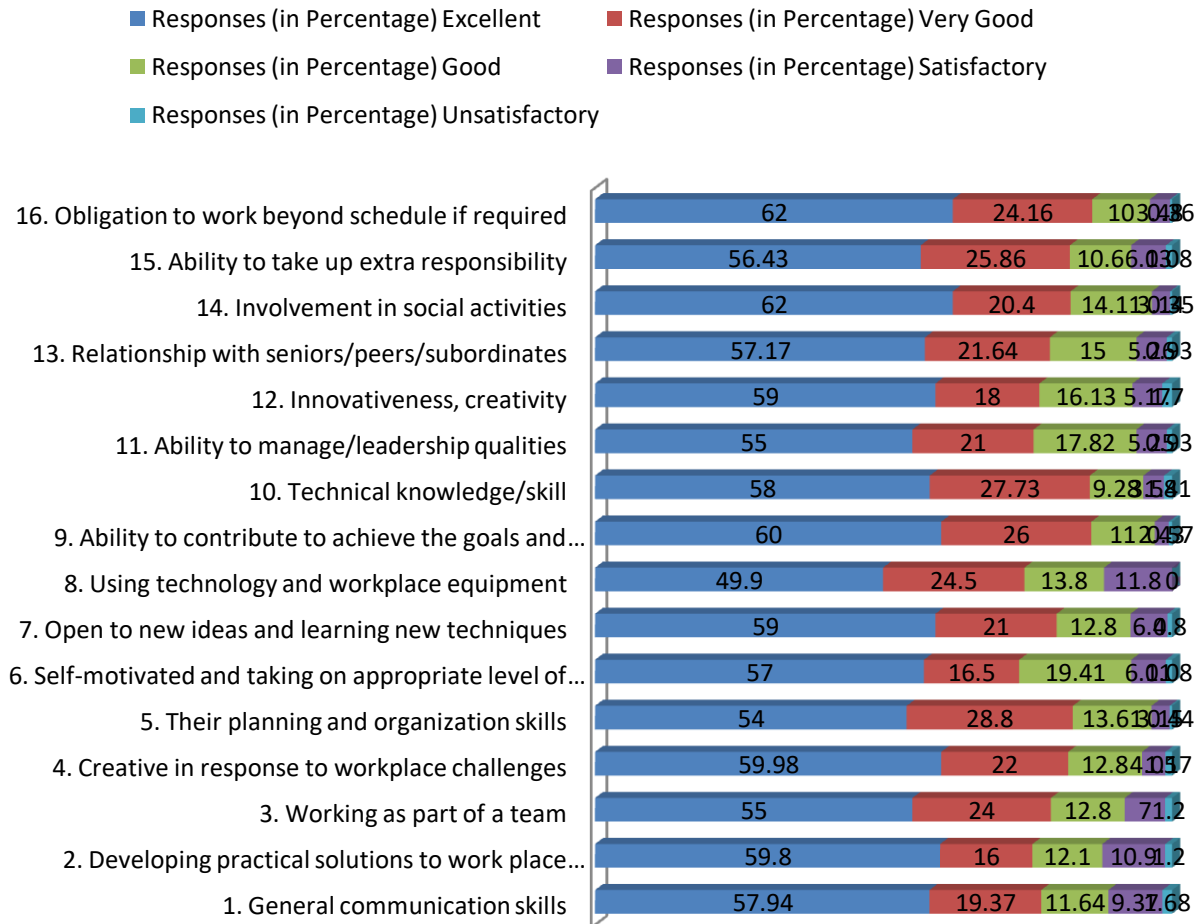
Employers feedback of Session (2020-21)



Employers feedback of Session (2019-20)

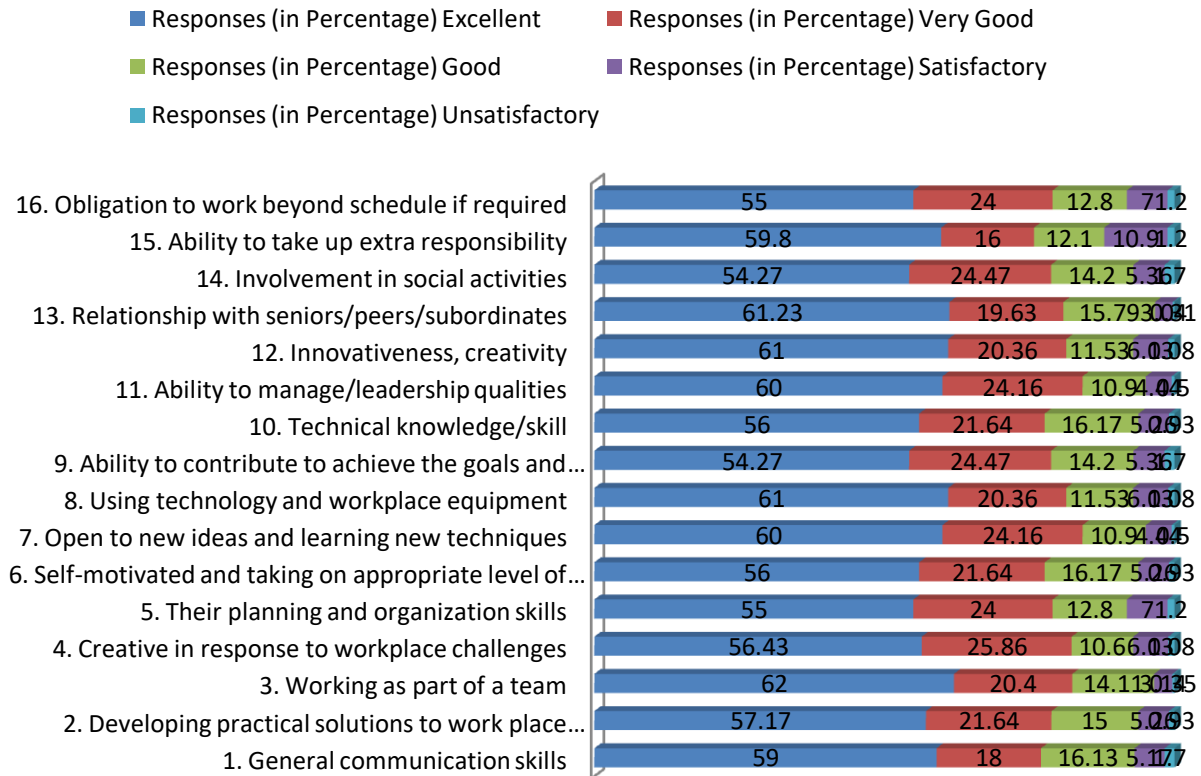
Statement	Responses (in Percentage)				
	Excellent	Very Good	Good	Satisfactory	Unsatisfactory
1. General communication skills	57.94	19.37	11.64	9.37	1.68
2. Developing practical solutions to work place problems	59.8	16	12.1	10.9	1.2
3. Working as part of a team	55	24	12.8	7	1.2
4. Creative in response to workplace challenges	59.98	22	12.8	4.05	1.17
5. Their planning and organization skills	54	28.8	13.61	3.15	0.44
6. Self-motivated and taking on appropriate level of responsibility	57	16.5	19.41	6.01	1.08
7. Open to new ideas and learning new techniques	59	21	12.8	6.4	0.8
8. Using technology and workplace equipment	49.9	24.5	13.8	11.8	0
9. Ability to contribute to achieve the goals and objectives of the institution	60	26	11	2.43	0.57
10. Technical knowledge/skill	58	27.73	9.28	3.58	1.41
11. Ability to manage/leadership qualities	55	21	17.82	5.25	0.93
12. Innovativeness, creativity	59	18	16.13	5.17	1.7
13. Relationship with seniors/peers/subordinates	57.17	21.64	15	5.26	0.93
14. Involvement in social activities	62	20.4	14.11	3.14	0.35
15. Ability to take up extra responsibility	56.43	25.86	10.6	6.03	1.08
16. Obligation to work beyond schedule if required	62	24.16	10	3.48	0.36

Employers feedback of Session (2019-20)



Employers feedback of Session (2018-19)					
Statement	Responses (in Percentage)				
	Excellent	Very Good	Good	Satisfactory	Unsatisfactory
1. General communication skills	59	18	16.13	5.17	1.7
2. Developing practical solutions to work place problems	57.17	21.64	15	5.26	0.93
3. Working as part of a team	62	20.4	14.11	3.14	0.35
4. Creative in response to workplace challenges	56.43	25.86	10.6	6.03	1.08
5. Their planning and organization skills	55	24	12.8	7	1.2
6. Self-motivated and taking on appropriate level of responsibility	56	21.64	16.17	5.26	0.93
7. Open to new ideas and learning new techniques	60	24.16	10.9	4.44	0.5
8. Using technology and workplace equipment	61	20.36	11.53	6.03	1.08
9. Ability to contribute to achieve the goals and objectives of the institution	54.27	24.47	14.2	5.36	1.7
10. Technical knowledge/skill	56	21.64	16.17	5.26	0.93
11. Ability to manage/leadership qualities	60	24.16	10.9	4.44	0.5
12. Innovativeness, creativity	61	20.36	11.53	6.03	1.08
13. Relationship with seniors/peers/subordinates	61.23	19.63	15.79	3.04	0.31
14. Involvement in social activities	54.27	24.47	14.2	5.36	1.7
15. Ability to take up extra responsibility	59.8	16	12.1	10.9	1.2
16. Obligation to work beyond schedule if required	55	24	12.8	7	1.2

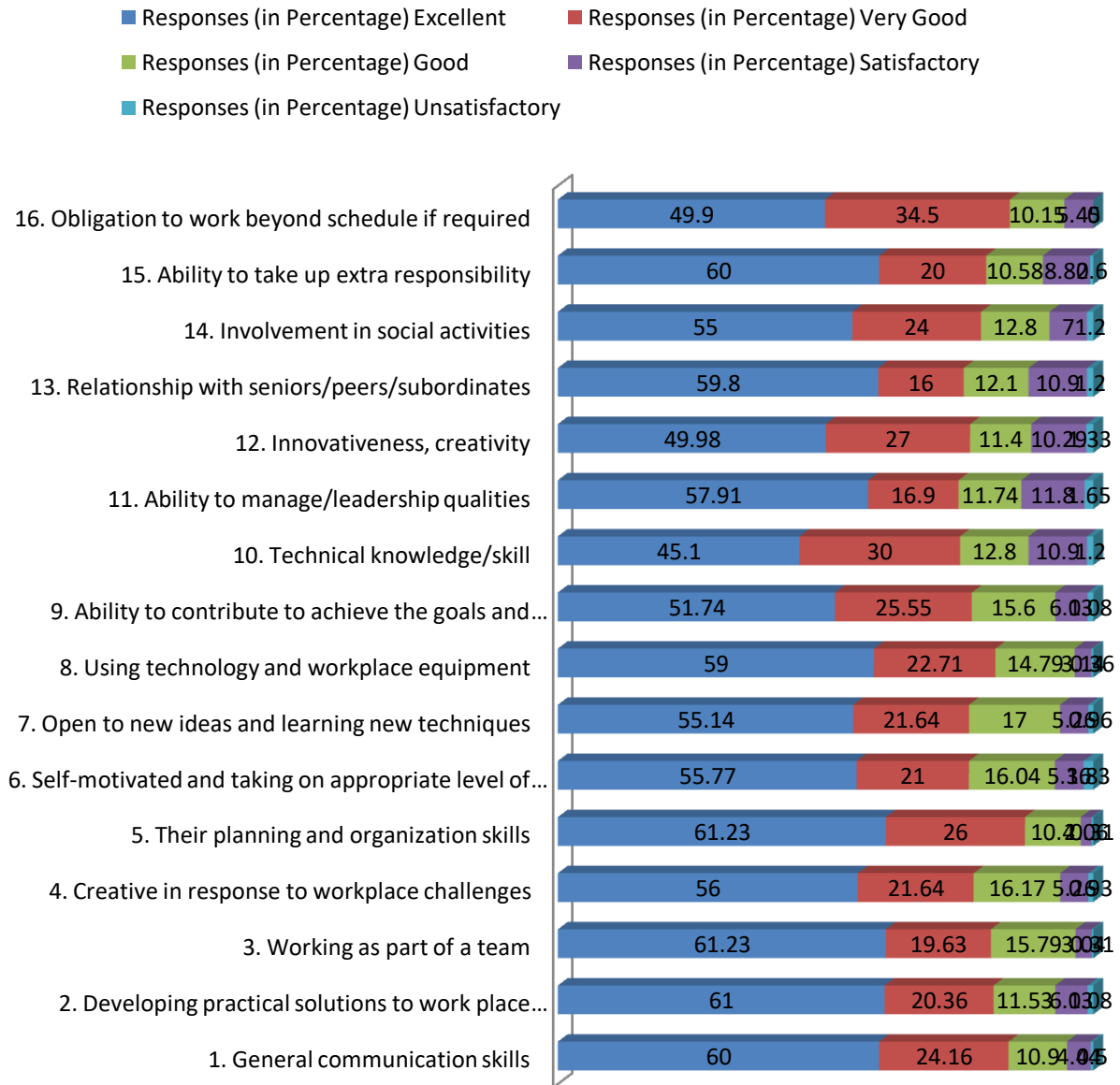
Employers feedback of Session (2018-19)



Employers feedback of Session (2017-18)

Statement	Responses (in Percentage)				
	Excellent	Very Good	Good	Satisfactory	Unsatisfactory
1. General communication skills	60	24.16	10.9	4.44	0.5
2. Developing practical solutions to work place problems	61	20.36	11.53	6.03	1.08
3. Working as part of a team	61.23	19.63	15.79	3.04	0.31
4. Creative in response to workplace challenges	56	21.64	16.17	5.26	0.93
5. Their planning and organization skills	61.23	26	10.4	2.06	0.31
6. Self-motivated and taking on appropriate level of responsibility	55.77	21	16.04	5.36	1.83
7. Open to new ideas and learning new techniques	55.14	21.64	17	5.26	0.96
8. Using technology and workplace equipment	59	22.71	14.79	3.14	0.36
9. Ability to contribute to achieve the goals and objectives of the institution	51.74	25.55	15.6	6.03	1.08
10. Technical knowledge/skill	45.1	30	12.8	10.9	1.2
11. Ability to manage/leadership qualities	57.91	16.9	11.74	11.8	1.65
12. Innovativeness, creativity	49.98	27	11.4	10.29	1.33
13. Relationship with seniors/peers/subordinates	59.8	16	12.1	10.9	1.2
14. Involvement in social activities	55	24	12.8	7	1.2
15. Ability to take up extra responsibility	60	20	10.58	8.82	0.6
16. Obligation to work beyond schedule if required	49.9	34.5	10.15	5.45	0

Employers feedback of Session (2017-18)



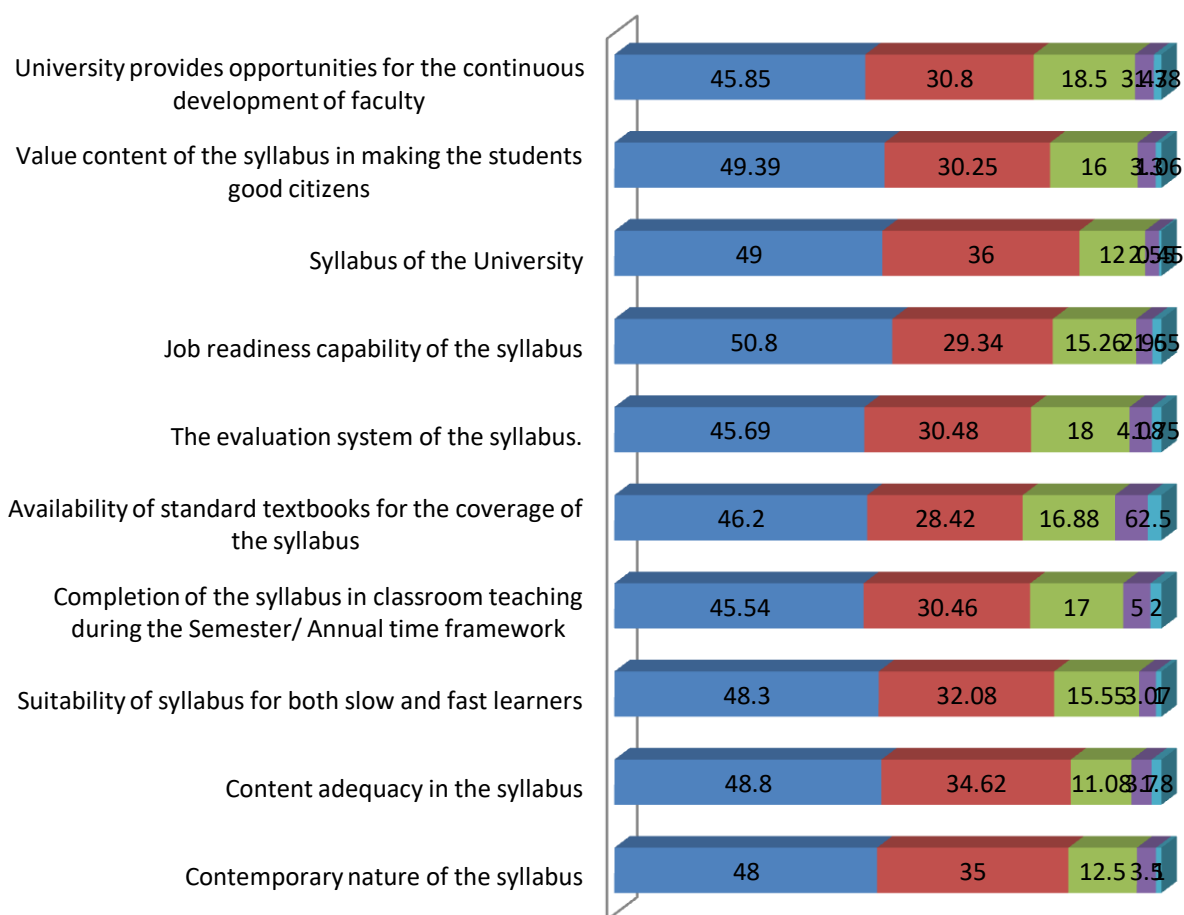
Teachers feedback of Session (2021-22)

For teachers, the feedback addressed issues like suitability the course and its need base, outcomes of the curriculum, relationship with course content and corresponding reference material, availability of reference materials in terms with curriculum, evaluation methods and curriculum delivery, etc.

2021-22	Excellent / उत्कृष्ट	Very Good/ बहुत अच्छा	Good/ उत्तम	Satisfactory/ संतुष्ट	Unsatisfactory / असंतुष्ट
Contemporary nature of the syllabus	48	35	12.5	3.5	1
Content adequacy in the syllabus	48.8	34.62	11.08	3.7	1.8
Suitability of syllabus for both slow and fast learners	48.3	32.08	15.55	3.07	1
Completion of the syllabus in classroom teaching during the Semester/ Annual time framework	45.54	30.46	17	5	2
Availability of standard textbooks for the coverage of the syllabus	46.2	28.42	16.88	6	2.5
The evaluation system of the syllabus.	45.69	30.48	18	4.08	1.75
Job readiness capability of the syllabus	50.8	29.34	15.26	2.95	1.65
Syllabus of the University	49	36	12	2.55	0.45
Value content of the syllabus in making the students good citizens	49.39	30.25	16	3.3	1.06
University provides opportunities for the continuous development of faculty	45.85	30.8	18.5	3.47	1.38

Teachers feedback of Session (2021-22)

■ Excellent / उत्कृष्ट ■ Very Good/ बहुत अच्छा ■ Good/ उत्तम
■ Satisfactory/ संतुष्ट ■ Unsatisfactory / असंतुष्ट

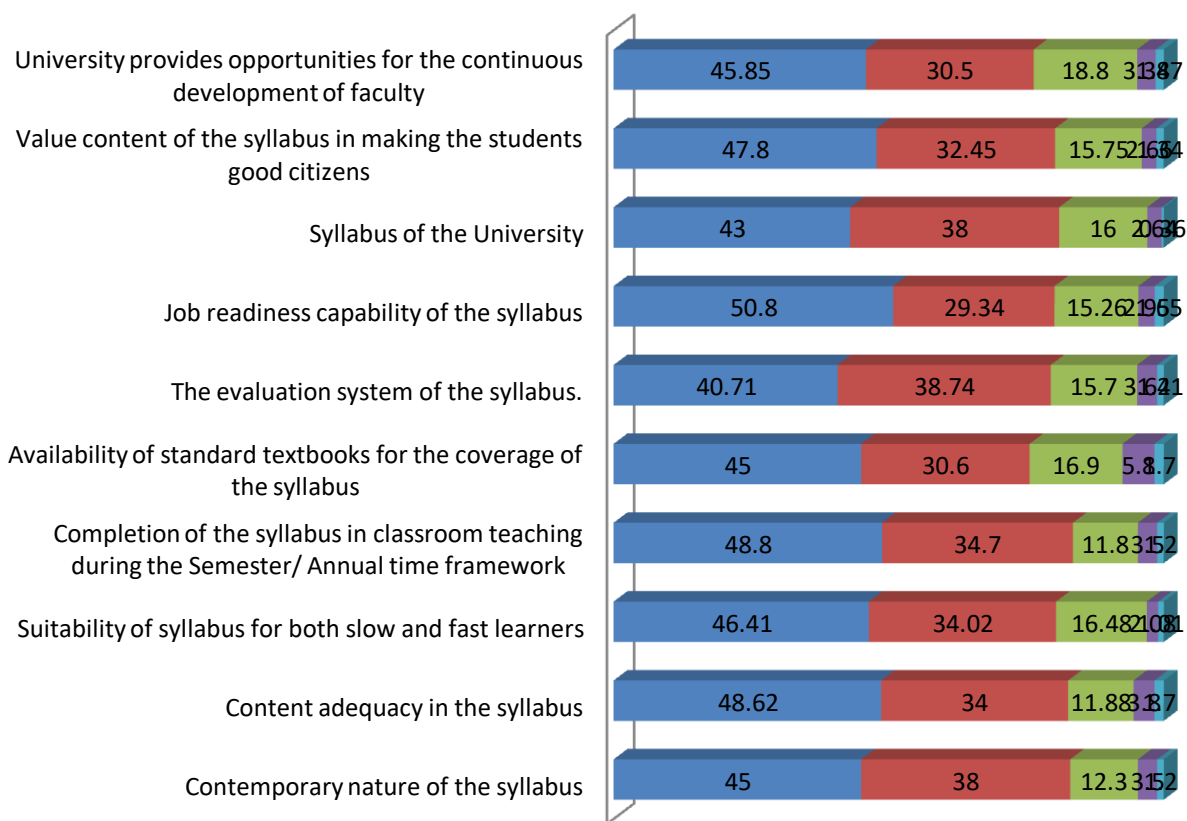


Teachers feedback of Session (2020-21)

2020-21	Excellent / उत्कृष्ट	Very Good/ बहुत अच्छा	Good/ उत्तम	Satisfactory/ संतुष्ट	Unsatisfactory / असंतुष्ट
Contemporary nature of the syllabus	45	38	12.3	3.5	1.2
Content adequacy in the syllabus	48.62	34	11.88	3.8	1.7
Suitability of syllabus for both slow and fast learners	46.41	34.02	16.48	2.08	1.01
Completion of the syllabus in classroom teaching during the Semester/ Annual time framework	48.8	34.7	11.8	3.5	1.2
Availability of standard textbooks for the coverage of the syllabus	45	30.6	16.9	5.8	1.7
The evaluation system of the syllabus.	40.71	38.74	15.7	3.64	1.21
Job readiness capability of the syllabus	50.8	29.34	15.26	2.95	1.65
Syllabus of the University	43	38	16	2.64	0.36
Value content of the syllabus in making the students good citizens	47.8	32.45	15.75	2.66	1.34
University provides opportunities for the continuous development of faculty	45.85	30.5	18.8	3.38	1.47

Teachers feedback of Session (2020-21)

■ Excellent / उत्कृष्ट ■ Very Good/ बहुत अच्छा ■ Good/ उत्तम
■ Satisfactory/ संतुष्ट ■ Unsatisfactory / असंतुष्ट

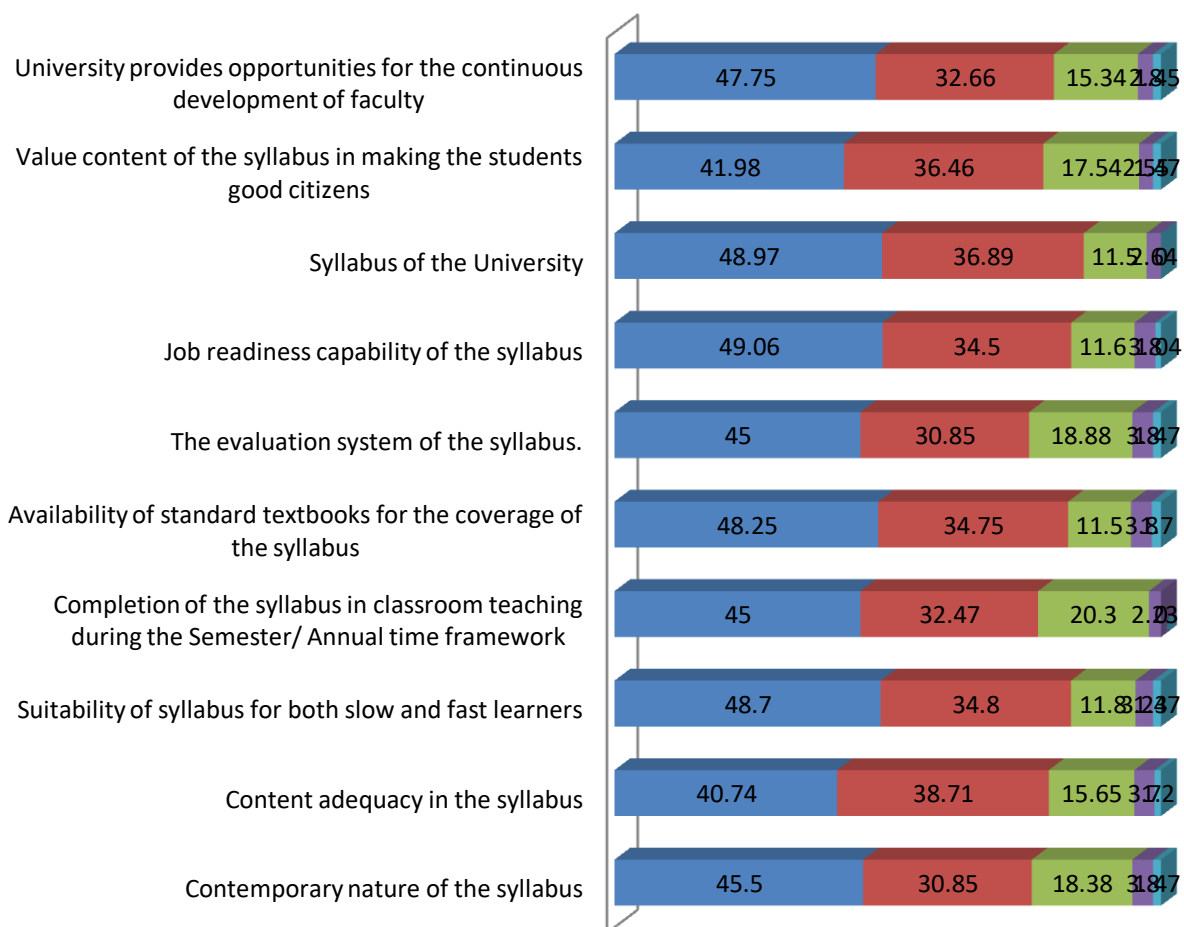


Teachers feedback of Session (2019-20)

2019-20	Excellent / उत्कृष्ट	Very Good/ बहुत अच्छा	Good/ उत्तम	Satisfactory/ संतुष्ट	Unsatisfactory / असंतुष्ट
Contemporary nature of the syllabus	45.5	30.85	18.38	3.8	1.47
Content adequacy in the syllabus	40.74	38.71	15.65	3.7	1.2
Suitability of syllabus for both slow and fast learners	48.7	34.8	11.8	3.23	1.47
Completion of the syllabus in classroom teaching during the Semester/ Annual time framework	45	32.47	20.3	2.23	0
Availability of standard textbooks for the coverage of the syllabus	48.25	34.75	11.5	3.8	1.7
The evaluation system of the syllabus.	45	30.85	18.88	3.8	1.47
Job readiness capability of the syllabus	49.06	34.5	11.6	3.8	1.04
Syllabus of the University	48.97	36.89	11.5	2.64	0
Value content of the syllabus in making the students good citizens	41.98	36.46	17.54	2.55	1.47
University provides opportunities for the continuous development of faculty	47.75	32.66	15.34	2.8	1.45

Teachers feedback of Session (2019-20)

■ Excellent / उत्कृष्ट ■ Very Good/ बहुत अच्छा ■ Good/ उत्तम
■ Satisfactory/ संतुष्ट ■ Unsatisfactory / असंतुष्ट

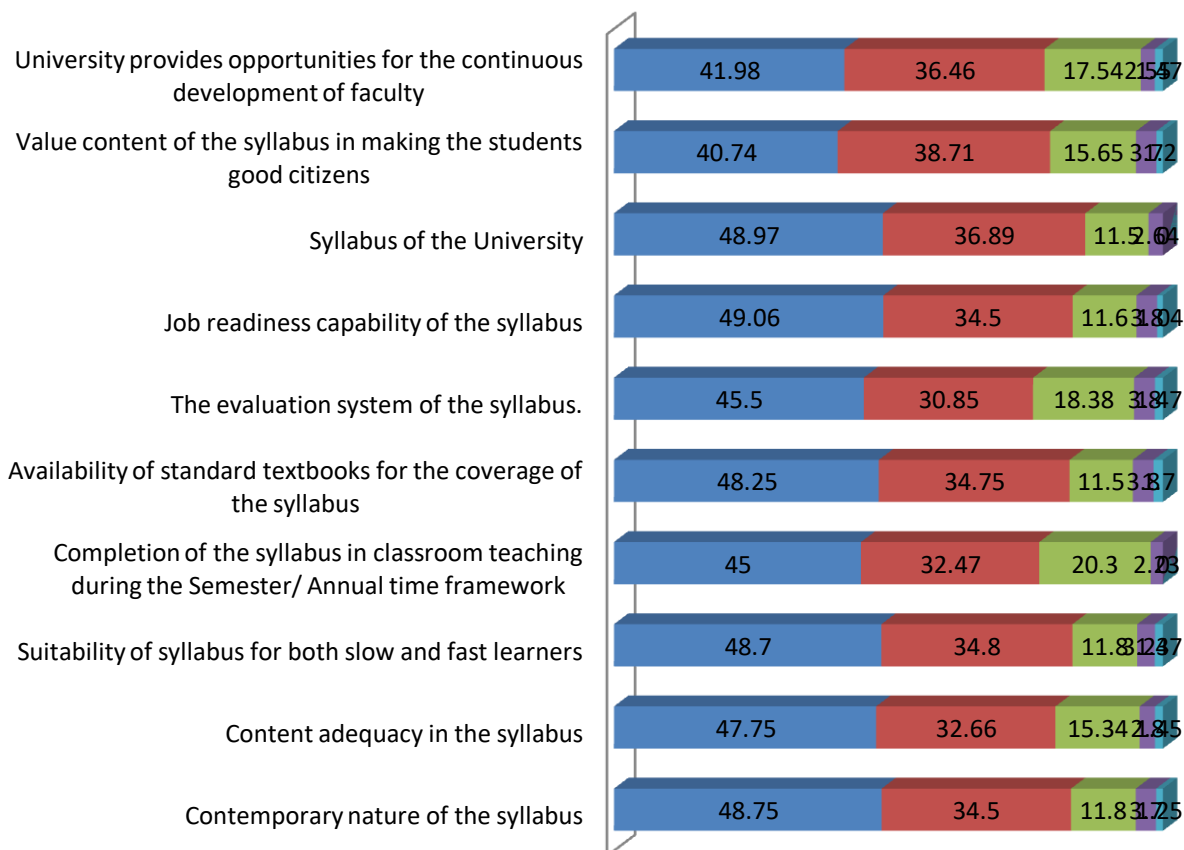


Teachers feedback of Session (2018-19)

2018-19	Excellent / उत्कृष्ट	Very Good/ बहुत अच्छा	Good/ उत्तम	Satisfactory/ संतुष्ट	Unsatisfactory / असंतुष्ट
Contemporary nature of the syllabus	48.75	34.5	11.8	3.7	1.25
Content adequacy in the syllabus	47.75	32.66	15.34	2.8	1.45
Suitability of syllabus for both slow and fast learners	48.7	34.8	11.8	3.23	1.47
Completion of the syllabus in classroom teaching during the Semester/ Annual time framework	45	32.47	20.3	2.23	0
Availability of standard textbooks for the coverage of the syllabus	48.25	34.75	11.5	3.8	1.7
The evaluation system of the syllabus.	45.5	30.85	18.38	3.8	1.47
Job readiness capability of the syllabus	49.06	34.5	11.6	3.8	1.04
Syllabus of the University	48.97	36.89	11.5	2.64	0
Value content of the syllabus in making the students good citizens	40.74	38.71	15.65	3.7	1.2
University provides opportunities for the continuous development of faculty	41.98	36.46	17.54	2.55	1.47

Teachers feedback of Session (2018-19)

■ Excellent / उत्कृष्ट ■ Very Good/ बहुत अच्छा ■ Good/ उत्तम
■ Satisfactory/ संतुष्ट ■ Unsatisfactory / असंतुष्ट



Teachers feedback of Session (2017-18)

2017-18	Excellent / उत्कृष्ट	Very Good/ बहुत अच्छा	Good/ उत्तम	Satisfactory/ संतुष्ट	Unsatisfactory / असंतुष्ट
Contemporary nature of the syllabus	48.75	34	11.75	3.7	1.8
Content adequacy in the syllabus	48.25	34.75	11.5	3.8	1.7
Suitability of syllabus for both slow and fast learners	46.41	32.02	16.48	3.28	1.81
Completion of the syllabus in classroom teaching during the Semester/ Annual time framework	48.8	34.7	11.8	3.5	1.2
Availability of standard textbooks for the coverage of the syllabus	50	32.6	11.9	3.8	1.7
The evaluation system of the syllabus.	40.74	38.71	15.65	3.7	1.2
Job readiness capability of the syllabus	50.34	29.8	15	3.26	1.6
Syllabus of the University	48.97	36.89	11.5	2.64	0
Value content of the syllabus in making the students good citizens	47.8	32.45	15.75	2.66	1.34
University provides opportunities for the continuous development of faculty	45.5	30.85	18.38	3.8	1.47

Teachers feedback of Session (2017-18)

■ Excellent / उत्कृष्ट ■ Very Good/ बहुत अच्छा ■ Good/ उत्तम
■ Satisfactory/ संतुष्ट ■ Unsatisfactory / असंतुष्ट

